

AGTERGROND INLIGTING DOKUMENT

CROWNE ROYALE ENERGY (EDMS) BPK: UITNODIGING OM TE REGISTREER AS 'N BELANGSTELLEDE EN GEAFFEKTEERDE PARTY, KENNISGEWING VAN OMGEWIGINGSMAGTIGING EN VERKENNINGSREG TOEPASSINGS PROSESSE EN KENNISGEWING VAN BESIKBAARHEID VAN OMVANGSVERSLAG VIR OPENBARE OORSIG
PETROLEUM AGENTSKAP SUID-AFRIKA VERW. NR.: 12/3/345 ER

1. INLEIDING

Deur die versoek vanaf die Direkteur van Crowne Royale Energy (EDMS) Bpk., 'n maatskappy wat onder die wette van die Republiek van Suid-Afrika val, met registrasie nommer 2015/126135/07, Thaya trading Enterprise bestuur die Omgewingsmagtiging toepassings prosesse vir die doel om aansoek te doen vir Verkenning Reg vir petroleum ten opsigte van Plase (GPS Koördinate in die middel: 25°3'5.40"S, 28°12'36.29"E) in die Landdrostdistrikte van Bela-Bela en Moretele in Limpopo en die Noordwes provinsies, met betrekking tot Artikel 79 van die Mineraal en Petroleum Hulpbronne Ontwikkeling Wet van 2002 (Wet 28 van 2002) (MPHOW) ("die Wet")

AANSOEKER: CROWNE ROYALE ENERGY (EDMS) BPK

KONSULTANT: THAYA TRADING ENTERPRISE CC (Kontak Persoon: Kwindla Nobaza)

Tel: 053 723 2257

Selfoon & WhatsApp: 071 959 9207

Epos adres: info@thayatrading.co.za

VERGADERING MOET BYGEWOON WORD DEUR ALLE BELANGHEBBENDES (INSLUITEND ALLE EN ENIGE BELANGSTELLEDE EN GEAFFEKTEERDE PARTYE)

BELA-BELA	MORETELE
Datum: 24 Oktober 2023 (Dinsdag) Tyd: 14h00	Datum: 25 Oktober 2023 (Woensdag) Tyd: 14h00
Lokaal: Bela-Bela Gemeenskap saal, Bela-Bela Plaaslike Munisipaliteit, Waterberg Distrik Munisipaliteit, Limpopo, Suid-Afrika.	Lokaal: Moretele Gemeenskap saal, Bojanala Distrik Munisipaliteit, Noordwes, Suid-Afrika

OPENBARE DEELNAME PROSES: Openbare deelname proses kan ook beskou word as 'n Belanghebbende Betrokkenheid proses. Hierdie proses gee die geleentheid vir Belangstellende en Geaffekteerde Partye (B&GP) om deel te neem in die proses van ontwikkeling van 'n voorgestelde projek . Belangstellende en Geaffekteerde Partye kan hulle kommentaar kragtens die voorgestelde projek binne 'n gespesifiseerde tydruimte indien. Hulle word die geleentheid gegun om inligting te ontvang ten opsigte van die voorgestelde ontwikkeling. Wanneer hierdie inligting ontvang word, kan Belangstellende en Geaffekteerde Partye deel neem in die omgewingsmagtiging proses. Hul voorleggings of kommentaar word deur die Omgewing Assessering Praktisyn oorweeg tydens die beoordeling van impakte. Die voorgelêde kommentaar word vervolgens deur die Bevoegde Owerheid (Departement van Minerale Hulpbronne en Energie, deur die Petroleum Agentskap Suid-Afrika) oorweeg.

WIE BELANGSTELLEDE & GEAFFEKTEERDE PARTYE IS: Belangstellende en Geaffekteerde Partye sluit in lede van die openbaar, grondeienaars / grond besetters, bure, staatsorgane, burgerlike groepe, forums, kommissies en agentskappe.

ROL VAN BELANGSTELLEDE EN GEAFFEKTEERDE PARTTYE: Belangstellende en Geaffekteerde Partye word hiermee in kennis gestel van die voorgestelde Verkenning aktiwiteite vir petroleum en word ook uitgenooi om deel te neem reg deur die Omgewingsmagtiging Aansoek periode.

Belangstellende en Geaffekteerde Partye kan deel neem in hierdie Omgewingsmagtiging aansoek proses deur die volgende te doen:

- Hersien alle inligting, verslagte en dokumente met betrekking tot die voorgestelde projek;
- Gee insette, maak kommentaar, vra vrae wat gestuur sal word na die Omgewing Assessering Praktisyn;
- Neem deel deur vergaderings by te woon soos dit geskeduleer is; en
- Deel inligting met ander belanghebbendes.

AKTIEWE GELYSDE AKTIWITEITE:

Regeringskennisgewing Regulasie 517 (2021) – Gelyste Kennisgewing 2; Aktiwiteit 18 | Regeringskennisgewing Regulasie 324 – Gelyste Kennisgewing 3; Aktiwiteit 12 e. Limpopo | Regeringskennisgewing Regulasie 324 – Gelyste Kennisgewing 3; Aktiwiteit 12 h. Noordwes

EIENDOM BESKRYWING:

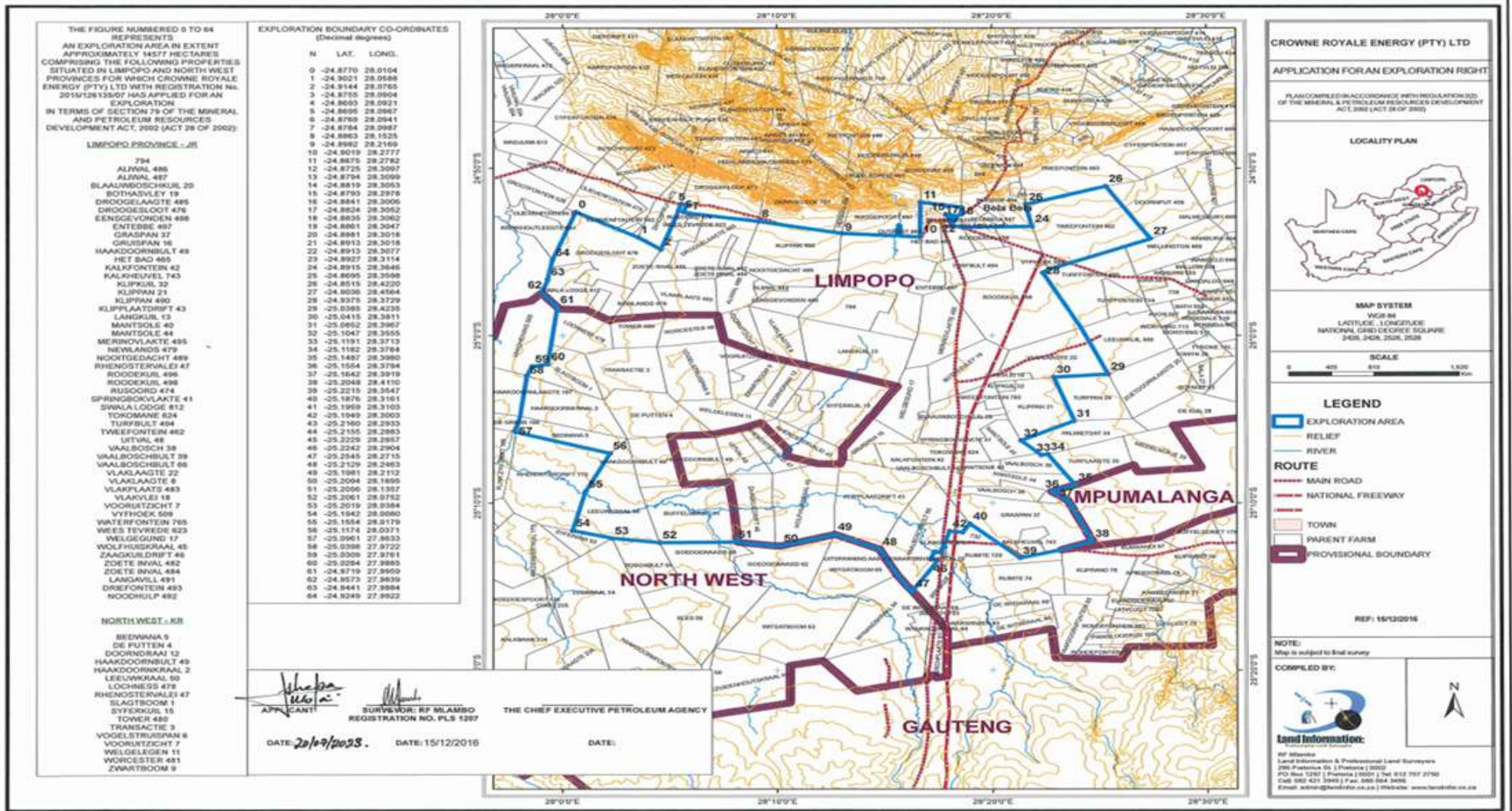
Plaas Name:	<p>Limpopo Provinsie; 794, Aliwal 486, Aliwal 487, Blaauwboschkuil 20, Bothasvley 19, Droogelaagte 485, Droogelaadte 485, Ensgevonden 488, Entebbe 497, Graspan 37, Gruispan 16, Haakdoornbult 49, Het bad 465, Kalkfontein 42, Kalkheuvel 743, Klipkuil 32, Klippan 21, Klipplaatdrift 43, Langkuil 13, Mantsole 40, Merinovlakte 495, Newlands 479, Noortgedacht 489, Rhenostervalei 47, Roodekuil 496, Roodekuil 498, Rusoord 474, Springbokvlakte 41, Swala Lodge 812, Tokomane 624, Turfbult 494, Tweefontein 462, Uitval 48, Vaalbosch 38, Vaalboschbult 39, Vaalboschbult 66, Vlaklaagte 22, Vlaklaagte 8, Vlakplaats 483, Vlakvlei 18, Vooruitzicht 7, Vyfhoek 509, Wterfontein 765, Weestevrede 623, Welgegund 17, Wolfhuiskraal 45, Zaagkuidrift 46, Zoete inval 482, Zoete inval 484, Langavill 491, Driefontein 493, Noodhulp 492</p> <p>Noordwes Provinsie – KR</p> <p>Bedwana 5, De Putten 4, Doorndraai 12, Haakdoornbult 49, Haakdoornkraal 2, Leeuwkraal 50, Lochness 478, Rhenostervalei 47, Slagtboom 1, Syferkuil 15, Tower</p>
--------------------	---

	460, Transactie 3, Vogelstrispan 6, Vooruitzicht 7, Welgelegen 11, Worcester 481, Zwartboom 9
Aansoek gebied (Ha)	Ongeveer 1'456 vierkante km
Landdrosdistrik:	Bela-Bela en Moretele in Limpopo en Noordwes provinsies, onderskeidelik.
Afstand en rigting vanaf naaste dorp	Die aansoek gebied is geleë ongeveer 55 km Noord van Pretoria stad, ongeveer 18 km Noord van Hammanskraal, ongeveer 51 km Noordoos van Brits, Suid-Afrika.

Kragtens Artikel 79 van die Mineraal & Petroleum Hulpbronne Ontwikkeling Wet van 2002 (Wet 28 van 2002) (MPHOW) ("die Wet"), het Crowne Royale Energy aansoek gedoen vir Verkennings Reg ten opsigte van verskeie Plase (GPS Koördinate in die middel: 25°3'5.40"S, 28°12'36.29"E) in die Landdrosdistrikte van Bela-Bela en Moretele in die Limpopo en Noordwes provinsies, onderskeidelik. Die Petroleum Agentskap Suid-Afrika (PASA) het die aansoek aanvaar wat ingedien is deur Crowne Royale Energy (EDMS) Bpk. ("CRE") om te verken vir petroleum.

Kennisgewing word hiermee gegee van 'n Openbare Deelname Proses kragtens die MPHOW, die Omgewingsimpak Studie (OIS) Regulasies van 2014, soos gewysig onder GN R326 en die volgende stukke wetgewing:

- Die Nasionale Omgewingswette wysiging Wet 2 van 2022 (NOWWW); en
- Artikel 38 van die Nasionale Erfenishulpbronne Wet van 1999 (Wet Nr. 25 van 1999) (NEHW).



Figuur 1: Liggingskaart beeld uit Verkenning Reg Grens

Crowne Royale Energy (EDMS) Bpk. het voorgestel om 2 tot 3 boorgate te boor as 'n minimum op 'n gegewe tyd, progressiewe rehabilitasie te onderneem. Boor plekke sal toeganklik wees deur van die bestaande paaie en plaas spore gebruik te maak. Die boor tuig sal dieptes van groter as 200m kan boor en kan so diep as 700m boor. Dit mag dalk ook nodig wees om 'n 24-uur uitpomp toets te doen om die steenkool vorming water chemie te bepaal. Die geïdentifiseerde boorgate van belang sal dan beperk word en wag vir verdere ondersoek of sal geseël word met sement as dit nie meer verder nodig is nie.

Die Omgewingsmagtiging sal ook verplig wees deur die Departement van Minerale Hulpbronne en Energie (DMHE), deur die Petroleum Agentskap Suid-Afrika (PASA) kragtens die Wet op Nasionale Omgewingsbestuur (Nr. 107 van 1998) (WNOB), vir aktiwiteite in Gelyste Kennisgewing 2 (GN R517 van 2021) en Gelyste Kennisgewing 3 (GN R324 van 2017) van die Omgewingsimpak Assessering (OIA) Regulasies van 2014, soos gewysig vereis dat 'n omvangsbepaling en OIA prosesse onderneem moet word om 'n Omgewingsmagtiging in te lig oor die besluit van die DMHE, deur PASA. Openbare deelname is 'n sleutel komponent van die omgewings assessering proses.

Die voorgestelde Verkenningssaktiwiteite sal waarskynlik kulturele erfenishulpbronne wat op die eiendom geleë kan wees, beïnvloed. U kan toegang verkry (vanaf **29 September 2023**) tot die Omgewingsverslae (Omvangbepalingsverslag en daarna, Omgewingsimpakbepalingsverslag) deur die webwerf www.thayatrading.co.za te besoek vir verbeterde toeganklikheid. Alle persone en Belanghebbende en Geaffekteerde Partye (B&GPe) word genooi om enige insette of kommentaar by Thaya Trading Enterprise te lewer vanaf die datum van hierdie kennisgewing tot (op of voor) **07 November 2023**. Alle geregistreerde Belanghebbende en Geaffekteerde Partye sal die geleentheid gebied word om deel te neem vir die hele duur van die Geïntegreerde Omgewingsmagtiging aansoekproses. 'n Afskrif van die Omvangbepalingsverslag vir publieke insae is beskikbaar (vanaf **29 September 2023**) by die Ga-Motle-biblioteek, Jericho-biblioteek, Letlhabile-biblioteek, Bela-Bela Municipaliteit Kantore, Mphe batho-biblioteek, Moretele Municipaliteit Kantore, Papi Ntjane-biblioteek en Tladistad-biblioteek. Alternatiewelik, besoek www.thayatrading.co.za vir toeganklikheid.

Enige belanghebbende of geaffekteerde partye word hiermee uitgenooi om te registreer of sodanige en enige beswaar of insette moet skriftelik geopper of ingedien word by die Omgewingsevalueringspraktisyn hieronder genoem teen nie later nie as **07 November 2023**, vir aandag:

Omgewingsevalueringspraktisyn (Kwindla Nobaza) | Thaya Trading Enterprise | 9705 Eerste Laan | Rooisand | Kathu | 8446 | Tel: 053 723 2257 | Cell: 071 959 9207 | E-pos: info@thayatrading.co.za

Die Erfenisspesialis | Argeologiese- & Erfenisdienste Afrika (Edms) Bpk | 8843 Odessa Crescent, Cosmo City Ext 7, Northriding 2188 | E-pos: e.matenga598@gmail.com | Sel: 073 981 0637

Erfenisbeampte | Suid-Afrikaanse Erfenishulpbronagentskap | Posbus 4637, Kaapstad 8000 | Tel: (021) 462 4502 | Faks: (021) 462 4509 | E-pos: info@sahra.org.za

1.1. Mikpunte en doelwitte

Die mikpunt van die projek is om PASA in te lig oor die voorgestelde verkennings projek wat onderneem gaan word in die Landdrosdistrikte van Bela-Bela en Moretele in die Limpopo en Noordwes provinsies, dit sluit in 2-3 verkennings putte boor so wel as die sosio-ekonomiese, kulturele en biofisiese wat goed oorweeg moet word wanneer die verkennings werk dirigeer word.

1.2. Aansoek Prosesse vir die voorgestelde projek.

'n Aansoek vir die omgewingsmagtiging kragtens die Nasionale Omgewingsbestuur Wette Wysigings Wet 2 van 2022 was ingedien aan die Petroleum Agentskap Suid-Afrika in September 2023. Crowne Royale Energy (EDMS) Bpk. se voorstel is om 'n maksimum van 3 verkennings putte te boor binne die projek gebied. Die voorgestelde werksprogram sal uit die volgende fases bestaan.

- Put identifisering;
- Mobilisering Fase;
- Boor Fase;
- Put Uitvoering Fase;
- Put Toets Fase;
- Put Verlating Fase; en
- Rehabilitasie Fase.

1.2.1. *Put identifisering*

Die identifisering van put gebiede sal onderneem word deur 'n petroleum geoloog. Putte gaan geboor word hetsy in duplikate of drievoude op 'n verspreide wyse.

1.2.2. *Mobilisering Fase*

Die boor tuig sal om die toepassings gebied beweeg met die gebruik van bestaande toegang paaie en pad netwerke.

1.2.2.1. *Boor Fase*

Boorpunte van verskeie groottes gaan gebruik word vanaf die vlak van skoongemaakte oppervlak tot die maksimum diepte van 700m elk .

Na-boor, progressief of gelyktydige rehabilitasies gaan onderneem word. Elke geïdentifiseerde boorgat sal omhul en met sement bedek word vir verdere ondersoek.

1.2.3. *Put Uitvoering Fase*

Aantekening sal gedoen word vir elke put om die litologie daarvan te bekom.

1.2.4. Toets Fase

Put toetse sluit in die meting van verskeie grense, insluitend vloeitempo, druk en vloeibare samestelling. Die data wat ingesamel word tydens die put toetse sal gebruik word om die potensiele produktiwiteit van die put te bepaal, die kwaliteit van die reservoir en enige moontlike probleme of kwessies wat aangespreek moet word.

Put toetse sal help met die volgende:

- Die identifisering van potensiele probleme met die put of reservoir, soos skade aan die formasie met die teenwoordigheid van water of gas. Hierdie inligting kan gebruik word om produksie te optimaliseer en kostes te verminder;
- Verskaf waardevolle data oor die produktiwiteit van 'n put wat gebruik kan word om produksie te optimaliseer en die herstel van olie of gas te maksimaliseer;
- Put toetse kan waardevolle inligting voorsien oor die eienskappe van 'n reservoir, soos die deurlaatbaarheid en porositeit van die formasie. Hierdie inligting kan gebruik word om strategieë te ontwikkel vir die verbeterde herstel van olie

1.2.5. Put Verlating Fase

Om te verseker dat daar nie verdere agteruitgang van die omgewing voorkom as 'n resultaat van die voorgestelde aktiwiteite nie, sal 'n sistematiese manier van die verlating van boorgate gebruik word, wat die effektiewe verseël van alle gebiede waar petroleum in enige fase kan ontsnap of waar water vloei, insluit. Noemenswaardig, vorming vloeistowwe moet geïsoleer word. Sement-prop-set-werk gaan aangepak word. 'n Gesketsde plan wat liggings van albei geïdentifiseerde en verlate putte uitbeeld, gaan by PASA ingedien word na die verkenning aktiwiteite; egter word 'n sluitingsertifikaat verkry, indien toepaslik.

1.2.6. Demobilisasie Fase

Met die voltooiing van terrein aktiwiteite, sal die boor tuit en alle betrokke toerusting, masjinerie en gereedskap van die terrein verwyder word. Daarna sal rehabilitasie onderneem word tot 'n aanvaarbare vlak vir die grondeienaar.

2. Teiken Gebied en Alternatiewe

Ligging: Daar is gebiede wat geïdentifiseer is as teiken gebiede binne die verkennings reg toepassings area. Alternatiewe gaan verken word in beide die omvangsbepaling fase en omgewingsimpak assessering fases. Gebiede met 'n baie hoë sensitiwiteit gaan vermy word en Spesialis Assessering Verslae gaan elke gebied oorweeg.

Tegnologie - Gebruik van boor tuit: Dit word aanbeveel dat Crowne Royale Energy die boor tuit gebruik om aktiwiteite aan te pak wat betrekking het tot die voorgestelde projek.

3. BEHOEFTE EN WENSLIKHEID

Suid-Afrika, verskillende dele van Afrika en ander dele van die wêreld ervaar energie verwante uitdagings. Petroleum hulpbronne voorsien 'n noodsaaklike bron van energie alternatief. Ontwikkelinge soos die voorgestelde verkennings reg het die potensiaal om 'n proses in werking te stel van bepaling of geologiese strukture petroleum dra of nie en of dit olie van ekonomiese waarde bevat.

4. Put boor en toets periode

Die boor program gaan vergesel word met toetse. Albei hierdie prosesse gaan gevolg word vir 'n paar maande. Die implementering van die program kragtens putte wat geboor moet word gaan sistematiese prosesse insluit wat verseker dat die volgende stap geneem word vir resultate /waarnemings van die voorafgaande stap wat potensiaal aandui wat die volgende stap kan dra. Boor by elke terrein word verwag om onderneem te word oor 'n periode van drie maande.

5. Toegang tot Grond

Die A wettlike proses gaan gevolg word om toegang te kry tot die gebiede van belang binne die verkennings reg toepassings area.

6. Omgewingsbestuur

'n Omgewingsbestuur program gaan opgestel word, onderwerp aan 'n openbare deelname proses en ingedien na die DMHE, deur PASA vir oorweging en besluitneming.

7. TOEKOMSTIGE VERKENNING OF PRODUKSIE

Noemenswaardig, die inligting wat aangebied word in hierdie pamflet het betrekking tot die aansoek vir verkennings reg vir doeleindes wat geassosieerde aktiwiteite deur boor en toetse onderneem. Om toekomstige aktiwiteite te kan handhaaf, moet die ontwikkelaar of voorstander magtiging verkry vanaf die DMHE, deur PASA. Vir meer inligting of besonderhede aangaande die voorgestelde ontwikkeling, skakel die Omgewings Assessering Praktisyn wie se besonderhede op die

laaste bladsy verskyn van hierdie dokument en vra vir kopieë van die Omvangsbepaling Verslag en Omgewingsimpak Assessering Verslae.

8. Basislyn Biofisiese Omgewing

8.1. Streeks Geologiese Omgewing

Die geologie van die Waterberg Distrik bestaan uit vyf duidelike geologie Super Groepe. Die toepassings area is kenmerkend van die Waterberg en Lebowa groepe, met die Beaufort groep van die Karoo patroon wat kenmerkend is van die noordelike streek.

Klimaat: Die verkennings reg toepassings area is 'n bietjie vogtig en koeler as die noordelike streek van Waterberg Distrik Munisipaliteit.

Grond en grond vermoë: Die verkennings reg toepassings area het verskeie grond tipes, insluitend struktuurloos en teksturele kontras grond.

Hidrologie: Daar is riviere wat deurkruis deur die streek en ander water hulpbronne was geïdentifiseer binne die projek gebied.

Grondwater: Boorgate bestaan binne die toepassings area; egter, is hulle nie vir private gebruik nie.

Flora: Die projek gebied val binne die Savanna Bioom en is geklassifiseer as Springbokvlakte Thornveld, oorheersend in Limpopo, Noordwes.

Lug kwaliteit: Die projek gebied se omringende lug kwaliteit is oor die algemeen uitgedaag omdat daar aangaande myn werke is en industriële aktiwiteite in die distrikte.

8.1. KULTURELE OMGEWING

Erfenis/Kulturele hulpbronne: Erfenis en Kulturele hulpbronne bestaan binne die toepassings area. Alle geïdentifiseerde hulpbronne gaan deel wees van die beoogde spesialis verslag.

Paleontologiese hulpbronne: Die projek gebied is oorheersend met 'n baie hoë fossiel sensitiwiteit.

8.2. SOSIO-EKONOMIESE OMGEWING

Sosio-ekonomies: Beide Bela-Bela en Moretele gemeenskappe sal waarskynlik geaffekteer word deur die voorgestelde ontwikkeling, veral as toekomstige ontwikkeling haalbaar is.

Grond gebruik: Die verkennings reg toepassings area word gebruik vir industriële, landbou en myn aktiwiteite.

9. SPESIALIS STUDIES OM DIE OMGEWINGSMAGTIGING PROSES IN TE LIG

Die volgende spesialis assesserings sal onderneem word as deel van die OIA proses:

- Akwatiese Biodiversiteit assesserings;
- Geohidrologie Assessering;
- Erfenis Impak assessering;
- Geraas en vibrasie Assessering;
- Paleontologie Impak Assessering (Lessenaar); en
- Aardse Biodiversiteit assesserings.

10. OMGEWINGSMAGTIGING EN OPENBARE DEELNAME PROSES

10.1. OMGEWINGSMAGTIGING PROSES

Die OIA proses verskaf inligting oor die projek, met betrekking tot prosedurele komponente en die omgewing waarin die projek voorgestel word. Dit identifiseer en assesser, in konsultasie met B&GP, die potensiële negatiewe en positiewe biofisiese, kulturele en sosio-ekonomiese impakte

Die omgewingsassesering proses doen ook verslag oor bestuur maatreëls wat nodig is om impakte te versag tot 'n aanvaarbare vlak en sluit in vereistes vir monitering programme (waar nodig). Die proses stappe en geskatte tydsrame word voorsien hier onder:

Fase	Kategorie	Item
Fase 1	Voor-toepassing	Voor-toepassing vergadering met PASA.
		Identifisering van B&GP en ontwikkeling van die projek databasis.
		Stel B&GP in kennis van die projek (via koerant advertensies, webwerf kennisgewings, SMS/ WhatsApp, en hi
		Raak betrokke met B&GP via vergaderings en konsultasies.
Fase 2	Omvangbepaling	Stel Omvangbepaling Verslag en opsomming op.
		Dien in die OM aansoek na die DMHE.
		Versprei Omvangbepaling Verslag na B&GPs vir hersiening (30-dae hersiening periode).
		Handig in Omvangbepaling Verslag (insluitend B&GP kommentaar) na die DMHE vir hersiening en kommentaar
Fase 3	OIA en OBPv	Onderneem voorgestelde spesialis ondersoeke/studies.
		Stel op OIA en OBPv en opsomming.
		Versprei OIA and OBPv na B&GP en regulerende owerhede vir hersiening (30-dae hersiening periode).
		Handig in OIA en OBPv (insluitend B&GP kommentaar) na die DMHE vir besluitneming (107-dae besluitneming)
		Versprei DMHE besluit na B&GP wanneer ontvang.

OPENBARE DEELNAME PROSES

Die doel van die openbare deelname proses is om B&GP in kennis te stel van die voorgestelde projek en om hulle met betrokke inligting te voorsien en die geleentheid gee om kwessies of bekommernisse te opper kragtens die voorgestelde projek. Die openbare deelname proses sal onderneem word in lyn met die vereistes van Hoofstuk 6 van die OIA Regulasies van 2014, soos gewysig.

B&GP betrokke in die OIA proses word hieronder gelys:



Die voorgestelde Verkenningsaktiwiteite sal waarskynlik kulturele erfenishulpbronne wat op die eiendom geleë kan wees, beïnvloed. U kan toegang verkry (vanaf **03 Oktober 2023**) tot die Omgewingsverslae (Omvangbepalingsverslag en daarna, Omgewingsimpakbepalingsverslag) deur die webwerf www.thayatrading.co.za te besoek vir verbeterde toeganklikheid. Alle persone en Belanghebbende en Geaffekteerde Partye (B&GPe) word genooi om enige insette of kommentaar by Thaya Trading Enterprise te lewer vanaf die datum van hierdie kennisgewing tot (op of voor) **07 November 2023**. Alle geregistreerde Belanghebbende en Geaffekteerde Partye sal die geleentheid gebied word om deel te neem vir die hele duur van die Geïntegreerde Omgewingsmagtiging aansoekproses. 'n Afskrif van die Omvangbepalingsverslag vir publieke insae is beskikbaar (vanaf **03 Oktober 2023**) by die Ga-Motle-biblioteek, Jericho-biblioteek, Lethabile-biblioteek, Bela-Bela Munisipaliteit Kantore, Mphebotho-biblioteek, Moretele Munisipaliteit Kantore, Papi Ntjane-biblioteek en Tladistad-biblioteek. Alternatiewelik, besoek www.thayatrading.co.za vir toeganklikheid.

Enige belanghebbende of geaffekteerde partye word hiermee uitgenooi om te registreer of sodanige en enige beswaar of insette moet skriftelik geopper of ingedien word by die Omgewingsevalueringspraktisyn hieronder genoem teen nie later nie as **07 November 2023**, vir aandag:

Omgewingsevalueringspraktisyn (Kwindla Nobaza) | Thaya Trading Enterprise | 9705 Eerste Laan | Rooisand | Kathu | 8446 | Tel: 053 723 2257 | Cell: 071 959 9207 | E-pos: info@thayatrading.co.za

Die Erfenisspesialis | Argeologiese- & Erfenisdienste Afrika (Edms) Bpk | 8843 Odessa Crescent, Cosmo City Ext 7, Northriding 2188 | E-pos: e.matenga598@gmail.com | Sel: 073 981 0637

Erfenisbeampte | Suid-Afrikaanse Erfenishulpbronagentskap | Posbus 4637, Kaapstad 8000 | Tel: (021) 462 4502 | Faks: (021) 462 4509 | E-pos: info@sahra.org.za

PETROLEUM AGENTSKAP SUID-AFRIKA VERW. NR.: 12/3/345 ER

		Ligging	
Organisasie / Departement (indien toepaslik)			
Persoonlike Besonderhede			
		Naam & Van	
Pos Adres			
		Poskode	
Fisiese Adres			
		Poskode	
Werk Kontak Nommer			
Selfoon nommer			
Epos Adres			
Grondeienaar & Grond besetter			
Staat en / of spesifiseer of u eiendom grens binne die toepassing area is of nie, voorsien ons asseblief met u Plaas Naam & nommer of gedeelte of Erf nommer			
Tipe / Aard van belangstelling			Antwoord (Ja / Nee / N.V.T.)
Registreer asseblief Departement/Organisasie/Individueel as 'n Belangstellende en Geaffekteerde Party (B&GP) vir die voorgestelde ontwikkeling			
Ek/verteenwoordiger sal 'n kopie van die Omvangsbepaling en Omgewingsimpak assessering Verslae aangaan die voorgestelde ontwikkeling wil ontvang.			
Verkiesde metode van kommunikasie (merk met 'n X)			
Openbaarmaking			
Ek, _____ die ondergetekende openbaar hiermee hieronder alle en enige direkte besigheid, finansiële, persoonlike en / of enige ander belang wat ek het in die goedkeuring of weiering van die toepassing met betrekking tot die voorgestelde ontwikkeling.			
Handtekening: _____ Datum _____			
Slegs Vir Kantoor- of Interne Gebruik			
Verwysings Nommer		Handtekening van Vas vanger	

U kan bylaes aanheg as u sou wou.

Ek het die volgende insette of kommentaar om in te dien met betrekking tot die voorgestelde ontwikkeling:

Ek het die volgende insette of kommentaar om in te dien met betrekking tot die openbare deelname proses:

Deel asseblief. met permissie, volle name en kontak besonderhede van ander persone wat dalk belangstel in die voorgestelde ontwikkeling en die aangaande omgewingsmagtiging aansoek proses:

HANDIG IN DIE VOLTOOIDE REGISTRASIE VORM EN KOMMENTAAR SJABLOON TEEN NIE LATER AS DINSDAG, 06 NOVEMBER 2023 NIE, NA:

Thaya Trading Enterprise CC
Kwindla H. Nobaza
Selfoon & WhatsApp Nr.: 071 959 9207
Epos: info@thayatrading.co.za

Persoonlike inligting van Belangstellende en Geaffekteerde Partye gaan gebruik word vir die doeleinde van die akkurate kommunisering van hulle kommentaar of bekommernisse aan die leser en na die Bevoegde Owerheid. U persoonlike inligting sal op 'n databasis gehou word.	Gee u u toestemming dat u persoonlike inligting gebruik sal word in die Omgewingsimpak assessering Verslag en gestoor sal word in die Databasis?	
	JA	NEE

BACKGROUND INFORMATION DOCUMENT

CROWNE ROYALE ENERGY (PTY) LTD: INVITATION TO REGISTER AS AN INTERESTED AND AFFECTED PARTY, NOTICE OF ENVIRONMENTAL AUTHORISATION AND EXPLORATION RIGHT APPLICATION PROCESSES AND NOTICE OF AVAILABILITY OF SCOPING REPORT FOR PUBLIC REVIEW

PETROLEUM AGENCY SOUTH AFRICA REF. NO.: 12/3/345 ER

11. INTRODUCTION

At the request of the Director of Crowne Royale Energy (Pty) Ltd, a company incorporated under the laws of the Republic of South Africa, with registration number 2015/126135/07, Thaya trading Enterprise is managing the Environmental Authorisation application process for the purpose of applying for an Exploration Right for petroleum in respect of various Farms (GPS Co-ordinates at the centre: 25°3'5.40"S, 28°12'36.29"E) in the Magisterial Districts of Bela-Bela and Moretele in Limpopo and North West provinces, respectively in terms of Section 79 of the Mineral & Petroleum Resources Development Act, 2002 (Act 28 of 2002) (MPRDA) ("the Act").

APPLICANT: CROWNE ROYALE ENERGY (PTY) LTD

CONSULTANT: THAYA TRADING ENTERPRISE CC (Contact Person: Kwindla Nobaza)

Tel: 053 723 2257

Cell & WhatsApp: 071 959 9207

E-mail: info@thayatradng.co.za

MEETING TO BE ATTENDED BY ALL STAKEHOLDERS (INCLUDING ALL AND ANY INTERESTED AND AFFECTED PARTIES)

BELA-BELA	MORETELE
Date: 24 October 2023 (Tuesday) Time: 14h00	Date: 25 October 2023 (Wednesday) Time: 14h00
Venue: Bela-Bela community Hall, Bela-Bela Local Municipality, Waterberg District Municipality, Limpopo, South Africa.	Venue: Moretele Community Hall, Bojanala District Municipality, North West, South Africa

PUBLIC PARTICIPATION PROCESS: Public participation process may also be regarded a Stakeholder Engagement process, in general terms. This process gives an opportunity to Interested and Affected Parties (I&AP's) to partake in the process of development of a proposed project. Interested and Affected Parties may submit comments pertaining to a proposed project within specified timeframes. They get an opportunity to receive information in respect of the proposed development. Upon receipt of information, Interested and Affected Parties may participate in the environmental authorisation process. Their submissions or comments are considered by the Environmental Assessment Practitioner during assessment of impacts, among others. Subsequently, the submitted comments are considered by the Competent Authority (Department of Mineral Resources and Energy, through the Petroleum Agency South Africa)

WHO ARE INTERESTED & AFFECTED PARTIES: Interested and Affected Parties include, members of the public, landowners / land occupiers, neighbours, state organs, civil groups, forums, commissions and agencies.

ROLE OF INTERESTED AND AFFECTED PARTIES: Interested and Affected Parties are hereby notified of the proposed Exploration activities for petroleum and are also invited to participate throughout the Integrated Environmental Authorisation Application period.

Interested and Affected Parties may participate in this Environmental Authorisation application process by doing the following:

- Review all information, reports and documents in relation to the proposed project;
- Give input, make comments, ask questions that are to be sent to the Environmental Assessment Practitioner;
- Participate through attending of meetings as scheduled; and
- Share information amongst stakeholders.

TRIGGERED LISTED ACTIVITIES:

Government Notice Regulation 517 (2021) – **Listing Notice 2**; Activity 18 | Government Notice Regulation 324 – Listing Notice 3; Activity 12 e. Limpopo | Government Notice Regulation 324 – Listing Notice 3; Activity 12 h. North West

PROPERTY DESCRIPTION:

Farm Names:	<p>Limpopo Province; 794, Aliwal 486, Aliwal 487, Blaauwboschkuil 20, Bothasvley 19, Droogelaagte 485, Droogelaadte 485, Ensgevonden 488, Entebbe 497, Graspan 37, Gruispan 16, Haakdoornbult 49, Het bad 465, Kalkfontein 42, Kalkheuvel 743, Klipkuil 32, Klippan 21, Klipplaatdrift 43, Langkuil 13, Mantsole 40, Merinovlakte 495, Newlands 479, Noortgedacht 489, Rhenostervalei 47, Roodekuil 496, Roodekuil 498, Rusoord 474, Springbokvlakte 41, Swala Lodge 812, Tokomane 624, Turfbult 494, Tweefontein 462, Uitval 48, Vaalbosch 38, Vaalboschbult 39, Vaalboschbult 66, Vlaklaagte 22, Vlaklaagte 8, Vlakplaats 483, Vlakvlei 18, Vooruitzicht 7, Vyfhoek 509, Wterfontein 765, Weestevrede 623, Welgegund 17, Wolphuiskraal 45, Zaagkuidrift 46, Zoete inval 482, Zoete inval 484, Langavill 491, Driefontein 493, Noodhulp 492</p> <p>Northwest Province – KR Bedwana 5, De Putten 4, Doorndraai 12, Haakdoornbult 49, Haakdoornkraal 2, Leeuwkraal 50, Lochness 478, Rhenostervalei 47, Slagtboom 1, Syferkuil 15, Tower 460, Transactie 3, Vogelstrispan 6, Vooruitzicht 7, Welgelegen 11, Worcester 481, Zwartboom 9</p>
Application area (Ha)	Approximately 1'456 square km

Magisterial district:	Bela-Bela and Moretele in Limpopo and North West provinces, respectively.
Distance and direction from nearest town	The application area is situated approximately 55 km North of Pretoria city, approximately 18 km North of Hammanskraal, approximately 51 km Northeast of Brits, South Africa.

In terms of Section 79 of the Mineral & Petroleum Resources Development Act, 2002 (Act 28 of 2002) (MPRDA) (“the Act”), Crowne Royale Energy applied for an Exploration Right for petroleum in respect of various Farms (GPS Co-ordinates at the centre: 25°3'5.40"S, 28°12'36.29"E) in the Magisterial Districts of Bela-Bela and Moretele in Limpopo and North West provinces, respectively. The Petroleum Agency South Africa (PASA) has accepted the application that was lodged by Crowne Royale Energy (Pty) Ltd (“CRE”) explore for petroleum.

Notice is hereby given of a Public Participation Process in terms of the MPRDA, the Environmental Impact Assessment (EIA) Regulations of 2014, as amended under GN R326 and the following pieces of legislation:

- The National Environmental Laws Amendment Act 2 of 2022) (NEMLAA); and
- Section 38 of the National Heritage Resources Act, 1999 (Act No. 25 of 1999) (NHRA).

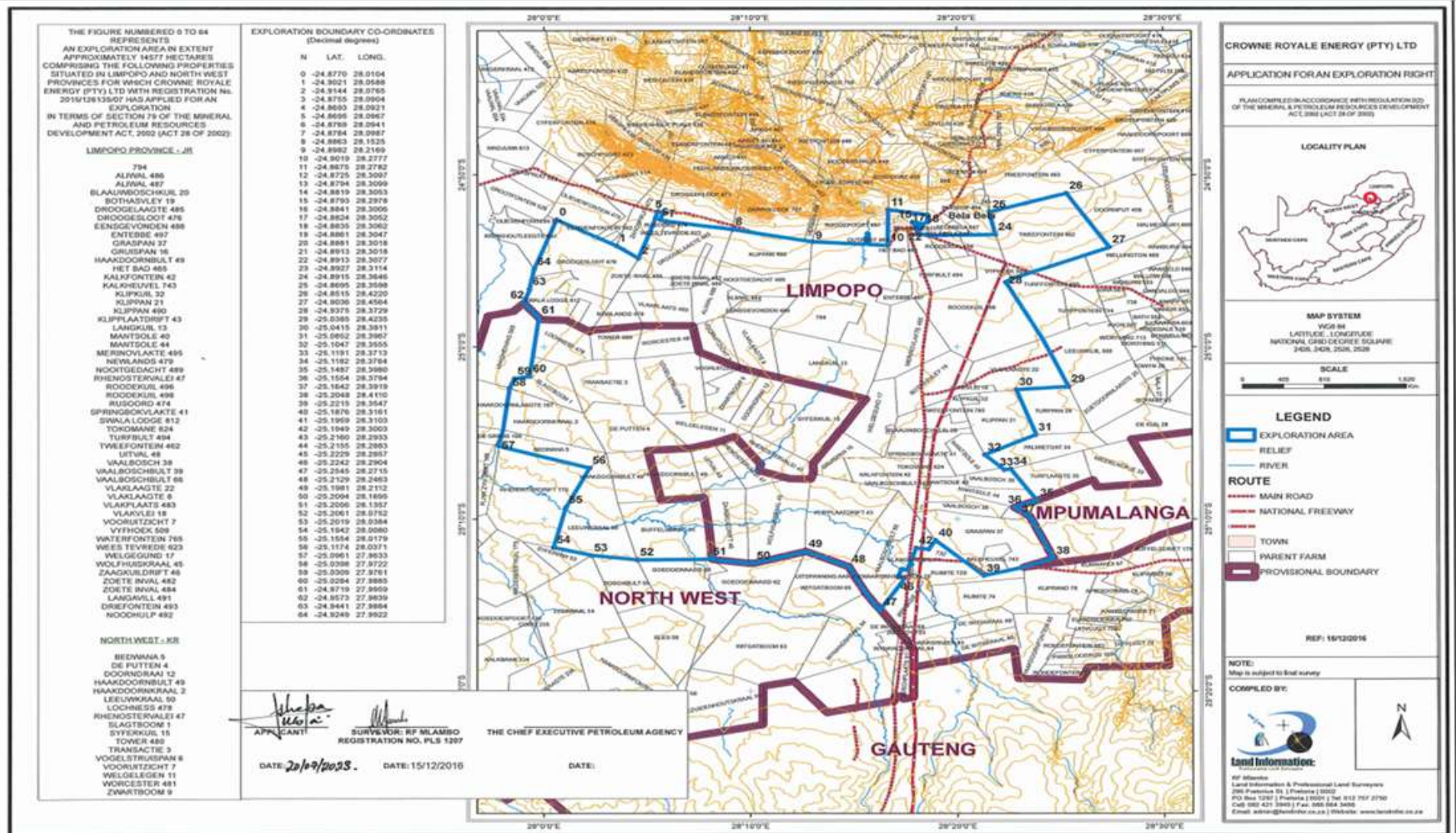


Figure 1: Locality Map depicts Exploration Right Boundary

Crowne Royale Energy (Pty) Ltd is proposing to drill 2 to 3 boreholes as a minimum at a time; however, undertake progressive rehabilitation. Drill sites will be accessed using existing roads and farm tracks. The drilling rig will drill at depths of greater than 200m and may go as deep as 700m. It may also be necessary to conduct a 24-hour pump-out test to determine the coal formation water chemistry. The identified boreholes of interest will then be capped pending further investigation or sealed with cement if not required further.

The Environmental Authorisation will also be required by the Department of Mineral Resources and Energy (DMRE), through the Petroleum Agency South Africa (PASA) in terms of the National Environmental Management Act (No. 107 of 1998) (NEMA), for activities in Listing Notice 2 (GN R 517 of 2021) and Listing Notice 3 (GN R324 of 2017) of the Environmental Impact Assessment (EIA) Regulations of 2014, as amended require that a scoping and EIA process be undertaken to inform an Environmental Authorisation decision from the DMRE, through PASA. Public participation is a key component of the environmental assessment process.

The proposed exploration activities are likely to affect cultural heritage resources that might be located on the properties. You can access (from **29 September 2023**) the Environmental Reports (Scoping Report and subsequently, Environmental Impact Assessment Report) by visiting the website www.thayatrading.co.za for improved accessibility. All persons and Interested and Affected Parties (I&APs) are invited to submit any input or comment(s) to Thaya Trading Enterprise CC from the date of this notice until (on or before) **06 November 2023**. All registered Interested and Affected Parties will be given an opportunity to participate for the whole duration of the Integrated Environmental Authorisation application process. A copy of Scoping Report for public review is available (from **29 September 2023**) at Ga-Motle Community Library, Jericho Library, Letlhabile Community Library, Bela-Bela Local Municipality offices, Mphebotho Community Library, Moretele Local Municipality offices, Papi Ntjane Community Library & Tladistad Library. Alternatively, visit www.thayatrading.co.za for accessibility.

Any interested or affected parties are hereby invited to register or such and any objection or inputs should be raised or lodged in writing with the Environmental Assessment Practitioner mentioned below by no later **06 November 2023**, for attention:

Environmental Assessment Practitioner (Kwindla Nobaza) | Thaya Trading Enterprise CC | 9705 Eerste Laan | Rooisand | Kathu | 8446 | Tel: 053 723 2257 | Cell: 071 959 9207 | Email: info@thayatrading.co.za

The Heritage Specialist | Archaeological & Heritage Services Africa (Pty) Ltd | 8843 Odessa Crescent, Cosmo City Ext 7, Northriding 2188 | Email: e.matenga598@gmail.com | Cell: 073 981 0637

Heritage Officer | South African Heritage Resources Agency | P.O. Box 4637, Cape Town 8000 | Tel: (021) 462 4502 | Fax: (021) 462 4509 | E-mail: info@sahra.org.za

11.1. Aims and objectives

The aim of this project is to inform PASA about the proposed exploration project that is going to be undertaken in the Magisterial Districts of Bela-Bela and Moretele in Limpopo and North West provinces, this includes 2 to 3 exploration-well

drilling as well as the socio-economic, cultural and biophysical that needs to be well considered when conducting the exploration work.

11.2. Application Processes for the proposed project.

An application for the environmental authorisation in terms of the National Environmental Management Laws Amendment Act 2 of 2022 was submitted to the Petroleum Agency South Africa in September 2023. Crowne Royale Energy (Pty) Ltd is proposing to drill a maximum of 3 exploration wells within the project area. The proposed works programme would consist of the following phases.

- Well identification;
- Mobilisation Phase;
- Drilling Phase;
- Well Execution Phase;
- Well Test Phase;
- Well abandonment Phase; and
- Rehabilitation Phase.

11.2.1. Well identification

The identification of well sites will be undertaken by a petroleum geologist. Wells are going to be drilled either in duplicates or triplicates in a scattered manner.

11.2.2. Mobilisation Phase

The drill rig is going to move around the application area using existing access roads and road network.

11.2.2.1. Drilling Phase

Drill bits of varying sizes are going to be utilised from the level of cleared surface to the total depth of 700m maximum each.

Post-drilling, progressive or concurrent rehabilitation is going to be undertaken. Each identified drillhole will be cased and cemented for further investigation.

11.2.3. Well Execution Phase

Logging will be conducted for each well to acquire the lithology thereof.

11.2.4. Test Phase

Well tests involve the measurement of various parameters, including flow rate, pressure, and fluid composition. The data collected during well testing will be used to determine the potential productivity of the well, the quality of the reservoir, and any potential problems or issues that may need to be addressed.

Well test will assist in the following:

- Identifying potential problem with the well or reservoir, such as damage to the formation or the presence of water or gas. This information can be used to optimize production and minimize costs;
- Provide valuable data about the productivity of a well, which can be used to optimize production and maximize oil or gas recovery;
- Well testing can provide valuable information about the characteristics of a reservoir, such as the permeability and porosity of the formation. This information can be used to develop strategies for enhanced oil recovery

11.2.5. Well Abandonment Phase

In ensuring that no further degradation of the environment occurs as a result of the proposed activities, a systematic way of abandoning boreholes will be utilised, which includes effectively sealing off all areas from where petroleum in whatever phase may escape or through which water may flow. Noteworthy, formation fluids have to be isolated. Cement plug-setting-job is going to be undertaken. A sketch plan the depicts locations of both identified and abandoned wells is going to be submitted to PASA post exploration activities; however a closure certificate is obtained, if applicable.

11.2.6. Demobilisation Phase

On completion of site activities, the drill rig and all associated equipment, machinery and tools are going to be taken out of site. Subsequently, rehabilitation is going to be undertaken to an acceptable level to the landowner.

12. Target Area and Alternatives

Location: There are areas that have been identified as target areas within the exploration right application area. Alternatives are going to be explored both at Scoping Phase and Environmental Impact Assessment Phases. Areas of very high sensitivity are going to be avoided and Specialist Assessment Reports are going to consider such area.

Technology – Use of Drill rig: It is recommended that Crowne Royale Energy uses drill rig to undertake activities in relation to the proposed project.

13. NEED AND DESIRABILITY

South Africa, different parts of Africa and other part of the world are experiencing energy-related challenges. Petroleum resources provide a vital source of energy alternative. Developments such as the proposed exploration right have a potential to enable a process of determination of whether or not geological structures potentially bear petroleum and oil of economic value.

14. Well drilling and testing period

The drilling programme is going to be accompanied by testing. Both these processes are going to be followed for a couple of months. The implementation of the programme in respect of wells to be drilled is going to involve a systematic process of ensuring that the next step is taken provided result /observations of the preceding step indicate potential for the next step to be carried through. Drilling at each site is expected to be undertaken over a period of three months.

15. Accessing Land

The A lawful process are going to be followed in order to gain access to areas of interest within the exploration right application area.

16. Environmental Management

An Environmental Management Programme is going to be compiled, subjected to a public participation process and submitted to the DMRE, through PASA for consideration and decision-making.

17. FUTURE EXPLORATION OR PRODUCTION

Noteworthy, the information presented in this pamphlet pertains to application for exploration right for purposes undertaking associated activities through drilling and testing. In order to undertake future activities, the developer or proponent must obtain authorisation from the DMRE, through PASA. For more information or details in respect of the proposed development, contact the Environmental Assessment Practitioner whose details are provided on the last page of this document and request for copies of Scoping Report and Environmental Impact Assessment Reports.

18. Baseline Biophysical Environment

8.1. Regional Geological Setting

The geology of Waterberg District comprises of five distinct geology Super Groups. The application area is characteristic of Waterberg and Lebowa groups, with the Beaufort group of the Karoo sequence that is characteristic of the northern region.

Climate: The exploration right application area is slightly humid and relatively cooler than the northern region of Waterberg District Municipality.

Soils and land capability: The exploration right application area is varying soil types, including structureless and textural contrast soils.

Hydrology: There are rivers that traverse through the region and other water resources were identified within the project area.

Groundwater: Boreholes do exist within the application area; however, they are for private use.

Flora: The project area Falls within the Savanna Biome and is classified as Springbovlakte Thornveld, predominately in the Limpopo, North West.

Air Quality: The project area's ambient air quality is generally challenged as there are on-going mining and industrial activities in the districts.

18.1. CULTURAL ENVIRONMENT

Heritage/Cultural resources: Heritage and Cultural resources do exist within the application area. All identified resources are going to be part of the specialist report envisaged.

Palaeontological resources: The project area is predominantly of very high fossil sensitivity.

18.2. SOCIO-ECONOMIC ENVIRONMENT

Socio-economic: Both Bela-Bela and Moretele communities are likely to be affected by the proposed development, especially if future development is feasible.

Land use: The exploration right application area is used for industrial, agricultural and mining activities among other things.

19. SPECIALIST STUDIES TO INFORM THE ENVIRONMENTAL AUTHORISATION PROCESS

The following specialist assessments will be undertaken as part of the EIA process:

- Aquatic Biodiversity assessments;
- Geohydrology Assessment;
- Heritage Impact assessment;
- Noise and Vibration Assessment;
- Palaeontology Impact Assessment (Desktop); and
- Terrestrial Biodiversity assessments.

20. ENVIRONMENTAL AUTHORISATION AND PUBLIC PARTICIPATION PROCESS

20.1. ENVIRONMENTAL AUTHORISATION PROCESS

The EIA process provides information on the project, pertaining to procedural components and the environment in which the project is proposed. It identifies and assesses, in consultation with I&APs, the potential negative and positive biophysical, cultural, and socio-economic impacts

The environmental assessment process also reports on management measures required to mitigate impacts to an acceptable level and incorporates requirements for monitoring programmes (where required). The process steps and estimated timeframes are provided below:

Phase	Category	Item
Phase 1	Pre-application	Pre-application meeting with PASA.
		Identification of I&APs and development of the project database.
		Notify I&APs of the project (via newspaper advertisements, site notices, SMS/ WhatsApp, and this document).
		Engage with I&APs via meetings and consultations.
Phase 2	Scoping	Compile Scoping Report and summary.
		Submit the EA application to the DMRE.
		Distribute Scoping Report to I&APs for review (30-day review period).
		Submit Scoping Report (inclusive of I&AP comments) to the DMRE for review and comment (43-day review period).
Phase 3	EIA and EMPr	Undertake proposed specialist investigations/studies.
		Compile EIA and EMPr and summary.
		Distribute EIA and EMPr to I&APs and regulatory authorities for review (30-day review period).
		Submit EIA and EMPr (inclusive of I&AP comments) to the DMRE for decision making (107-day decision-making period)
		Circulate DMRE decision to I&APs once received.
	Appeal process (if applicable) in terms of Appeal Regulations	

PUBLIC PARTICIPATION PROCESS

The purpose of the public participation process is to notify I&APs of the proposed project and to provide them with the relevant information and give opportunity to raise issues or concerns regarding the proposed project. The public participation process will be undertaken in accordance with the requirements of Chapter 6 of the EIA Regulations 2014, as amended.

I&APs involved in the EIA process are listed below:



The proposed exploration activities are likely to affect cultural heritage resources that might be located on the properties. You can access (from **03 October 2023**) the Environmental Reports (Scoping Report and subsequently, Environmental Impact Assessment Report) by visiting the website www.thayatradng.co.za for improved accessibility. All persons and Interested and Affected Parties (I&APs) are invited to submit any input or comment(s) to Thaya Trading Enterprise CC from the date of this notice until (on or before) **07 November 2023**. All registered Interested and Affected Parties will be given an opportunity to participate for the whole duration of the Integrated Environmental Authorisation application process. A copy of Scoping Report for public review is available (from **03 October 2023**) at Ga-Motle Community Library, Jericho Library, Letlhabile Community Library, Bela-Bela Local Municipality offices, Mphebotho Community Library, Moretele Local Municipality offices, Papi Ntjane Community Library & Tladistad Library. Alternatively, visit www.thayatradng.co.za for accessibility.

Any interested or affected parties are hereby invited to register or such and any objection or inputs should be raised or lodged in writing with the Environmental Assessment Practitioner mentioned below by no later **07 November 2023**, for attention:

Environmental Assessment Practitioner (Kwindla Nobaza) | Thaya Trading Enterprise CC | 9705 Eerste Laan | Rooisand | Kathu | 8446 | Tel: 053 723 2257 | Cell: 071 959 9207 | Email: info@thayatradng.co.za

The Heritage Specialist | Archaeological & Heritage Services Africa (Pty) Ltd | 8843 Odessa Crescent, Cosmo City Ext 7, Northriding 2188 | Email: e.matenga598@gmail.com | Cell: 073 981 0637

Heritage Officer | South African Heritage Resources Agency | P.O. Box 4637, Cape Town 8000 | Tel: (021) 462 4502 | Fax: (021) 462 4509 | E-mail: info@sahra.org.za

PETROLEUM AGENTSKAP SUID-AFRIKA VERW. NR.: 12/3/345 ER

		Location	
Organisation / Department <i>(If applicable)</i>			
Personal Details			
		Name & Surname	
Postal Address			
		Postal Code	
Physical Address			
		Postal Code	
Work Contact Number			
Cell Phone Number			
E-Mail Address			
Landowner & Land Occupier			
State and / or specify whether or not your property boundary is within the application area, please furnish us with your Farm Name & number or portion or Erf number			
Type / Nature of Interest			Answer (Yes / No / NA)
Please register Department/Organisation/Individual as an Interested and Affected Party (I&AP) for the proposed development			
I/representative would like to receive a copy of the Scoping and Environmental Impact Assessment Reports pertaining to the proposed development.			
Preferred method of communication <i>(Mark with an X)</i>			
Disclosure			
I, _____ the undersigned hereby disclose below all and any direct business, financial, personal and / or any other interest that I may have in the approval or refusal of the application pertaining to the proposed development.			
Signature: _____ Date _____			
For Office or Internal Use Only			
Reference Number		Signature of Capturer	

Please feel free to attach appendices should you so wish.

I have the following input or comments to submit pertaining to the proposed development:

I have the following input or comment to submit pertaining to the public participation process:

Please share per permission full names and contact details of other persons who may be interested in the proposed development and the on-going environmental authorisation application process:

PLEASE RETURN COMPLETED REGISTRATION FORM AND COMMENT TEMPLATE BY NO LATER THAN TUESDAY, 06 NOVEMBER 2023 TO:

Thaya Trading Enterprise CC
Kwindla H. Nobaza
Cell & WhatsApp No.: 071 959 9207
Email: info@thayatrading.co.za

Personal Information of Interested and Affected Parties is going to be used for purposes of communicating their comment or concerns accurately to the reader and to the Competent Authority. Your personal information is going to be kept in the database.	Do you consent to your personal information being used in Environmental Impact Assessment Report and kept in the Database?	
	YES	NO

TOKUMENTE YA BOITSEBIŠO KA KAKARETŠO

CROWNE ROYALE ENERGY (PTY) LTD: MEMO YA GO INGWADIŠA BJALO KA MOKGATLO WOO O NAGO LE KGALHEGO LE WOO O AMEGAGO, TSEBIŠO YA TŠHOMIŠO YA TUMELELO YA TIKOLOGO LE TOKELO YA GO NYAKIŠIŠA LE TSEBISO YA GO HUMANEGA GA PEGO YA TLHAHLOBO YA SETŠHABA

LEKALATIRELO LA AFRIKA BORWA LA PETROLEUM REF. NO.: 12/3/345 ER

21. MATSENO

Ka kgopelo yeo e tšwago go Molaodi wa Crowne Royale Energy (Pty) Ltd, e lego khamphani yeo e lego ka fase ga melao ya Repabliki ya Afrika Borwa, yeo e ngwadišitšwego ka fase ga nomoro ye ya 2015/126135/07, Thaya trading Enterprise ke yona e laola tshepedišo ya go kgopela Tumelelo ya Tikologo le go kgopela go dira Nyakišiša ya peteroleamo mabapi le Dipolasa tša go fapafapana (Dihlomathišo tša GPS yeo e lego mo senthareng: 25°3'5.40"S, 28°12'36.29"E) go ya ka Dilete tša Bomaseterata tša Bela Bela le Moretele ka Limpopo le diprofense tša Leboa Bodikela, ka go latelelana go ya ka Karolo ya 79 ya Molao wa Tlhabollo ya Methopo ya Diminerale le Peteroleamo, 2002 (Molao wa 28 wa 2002) (MPRDA) ("Molao").

MOKGOPEDI: CROWNE ROYALE ENERGY (PTY) LTD

MOELETŠI: THAYA TRADING ENTERPRISE CC (Motho yoo o ka ikgokaganya le yena ke: Kwindla Nobaza)

Mogala: 053 723 2257

Sele le WhatsApp: 071 959 9207

Imeile: info@thayatrading.co.za

BAKGATHATEMA KA MOKA BA SWANETŠE GO BA GONA POKANONG YE (GO AKARETŠWA LE BATHO KA MOKA BAO BA NAGO LE KGALHEGO LE BAO BA AMEGAGO

BELA-BELA	MORETELE
Letšatšikgwedi: 24 October 2023 (Labobedi) Nako: 14h00	Letšatšikgwedi: 25 October 2023 (Laboraro) Nako: 14h00
Lefelo: Holo ya setšhaba ya Bela-bela, Mmasepala wa Selegae wa Bela-Bela, Mmasepala wa Selete sa Waterberg, Limpopo, Afrika Borwa.	Lefelo: Holo ya Setšhaba ya Moretele, Mmasepala wa Selete sa Bojana, Leboa Bodikela, Afrika Borwa

MEGATO YA KAMOO SETŠHABA SE KA TŠEAGO KAROLO KA GONA: Megato ya go tšea karolo ya setšhaba le yona e ka tšewa bjalo ka tshepedišo ya Bakgathatema, ka kakaretšo. Megato ye e ne ya mekgatlo yeo e nago le Kgahlego le yeo e Amegago (I&AP's) sebaka sa go tšea karolo tshepedišong ya tlhabollo ya protšeke ye e šišintšwego. Mekgatlo ye e nago le Kgahlego le ye e Amegago e ka romela ditshwayotshwayo tše di lego gona mabapi le protšeke ye e šišintšwego ka gare ga dinako tše di beilwego. Ba hwetša sebaka sa go amogela boitsebišo bjoo bo lego mabapi le protšeke ya tlhabollo ye e šišintšwego. Ge ba hweditše boitsebišo bjoo, Mekgatlo ye e nago le Kgahlego le ye e Amegago e ka tšea karolo tshepedišong ya megato ya tumelelo ya tikologo. Dipelo goba ditshwayotshwayo tša bona di lebelelwa ke Mošomi wa go lekola dilo tša Tikologo nakong ya kelo ya ditlamorago tšeo di ka bago gona, gare ga tše dingwe tšeo

di lego gona. Ka morago ga moo, ditshwayotshwayo tše di rometšwego di lebelelwa ke Balaodi bao ba nago le Bokgoni (Kgoro ya Methopo ya Diminerale le Enetše, ka Setheo sa Peteroleamo Afrika Borwa)

MEKGATLO YEO E NAGO LE KGAHLEGO LE YEO E AMEGAGO: Mekgatlo ye e nago le Kgahlego le ye e Amegago e akaretša, maloko a setšhaba, bengnaga / badudi ba naga, baagišani, ditho tša mmušo, dihlopha tša setšhaba, diforamo, dikhomišene le makalatirelo.

KAROLO YEO E BAPALWAGO KE MEKGATLO YEO E NAGO LE KGAHLEGO LE YEO E AMEGAGO: Mekgatlo ye e nago le Kgahlego le ye e Amegago e tsebišwa ka mediro ye e šišintšwego ya go Nyakišiša peteroleamo gomme gape e laletšwa go tšea karolo Kgopelong ya Tumelelo ya Tikologo ye e Kopantšwego.

Mekgatlo ye e nago le Kgahlego le ye e Amegago e ka tšea karolo tshapedišong ye ya kgopelo ka go latela megato ye:

- Ka go Hlahlobišiša boitsebišo ka moka bjoo bo lego gona, dipego le ditokomane ka moka tša mabapi le protšeke ye e šišintšwego;
- Go fana ka ditšhupetšo, ka ditshwayotshwayo le ka go botšiša dipotšišo tšeo di swanetšego go romelwa go Mošomi wa go lekola dilo tša Tikologo;
- Go tšea karolo dipokanong tšeo di rulagantšwego; le
- Go abelana ka boitsebišo bjoo bo lego gona go bakgathatema.

MEDIRO YEO E LAEDITŠWEGO:

Molawana wa Tsebišo ya Mmušo 517 (2021) – **Tsebišo ya Lenaneo 2**; Modiro wa 18 | Molawana wa Tsebišo ya Mmušo 324 – Tsebišo ya Lenaneo 3; Modiro wa 12 e. Limpopo | Molawana wa Tsebišo ya Mmušo 324 – Tsebišo ya Lenaneo 3; Modiro wa 12 h. North West

TLHALOSO YA LEFELO:

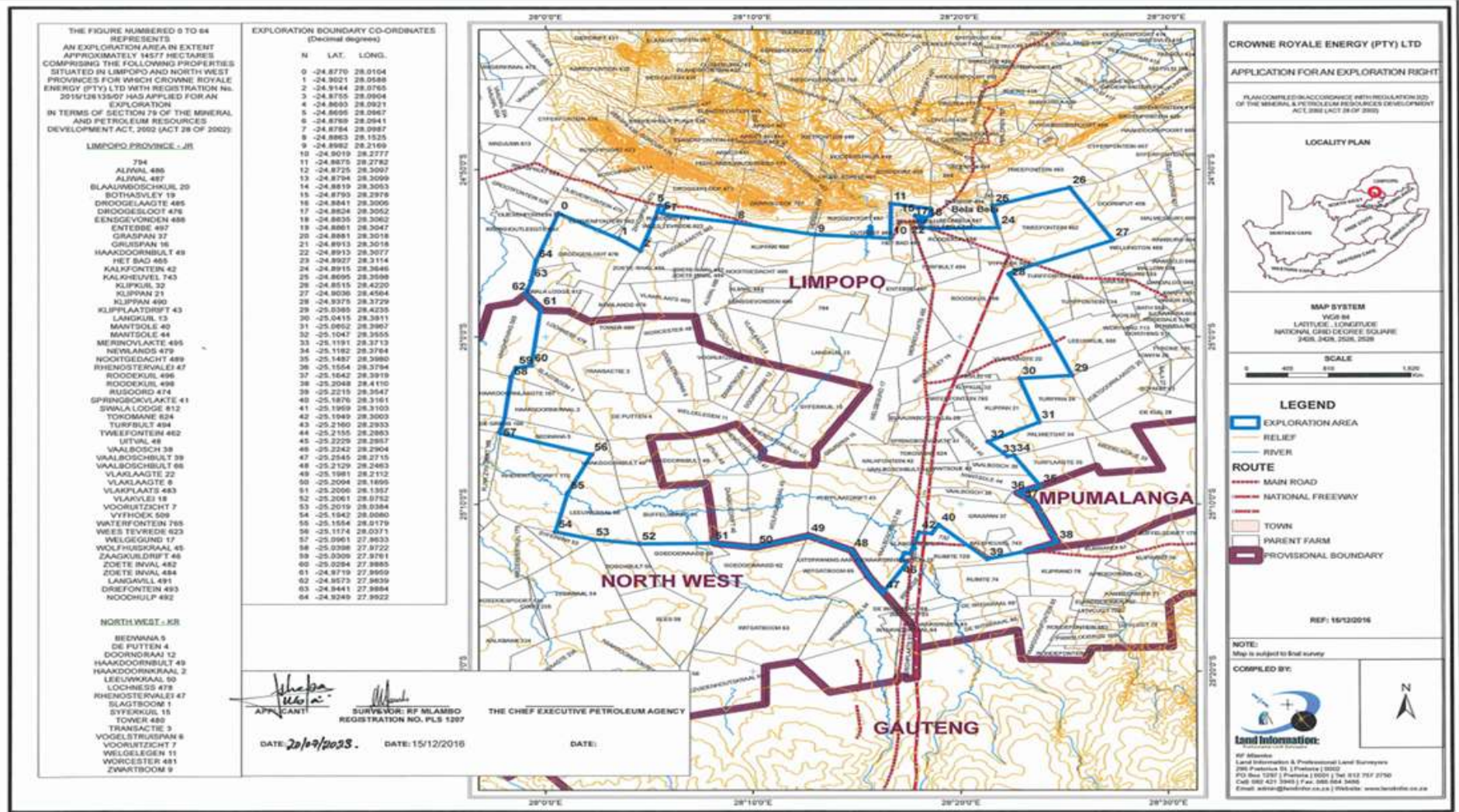
Maina a Dipolasa:	Profense ya Limpopo; 794, Aliwal 486, Aliwal 487, Blaauwboschkuil 20, Bothasvley 19, Droogelaagte 485, Droogelaadte 485, Ensgevonden 488, Entebbe 497, Graspan 37, Gruispan 16, Haakdoornbult 49, Het bad 465, Kalkfontein 42, Kalkheuvel 743, Klipkuil 32, Klippan 21, Klipplaatdrift 43, Langkuil 13, Mantsole 40, Merinovlakte 495, Newlands 479, Noortgedacht 489, Rhenostervalei 47, Roodekuil 496, Roodekuil 498, Rusoord 474, Springbokvlakte 41, Swala Lodge 812, Tokomane 624, Turfbult 494, Tweefontein 462, Uitval 48, Vaalbosch 38, Vaalboschbult 39, Vaalboschbult 66, Vlakraagte 22, Vlakraagte 8, Vlakplaats 483, Vlakvlei 18, Vooruitzicht 7, Vyfhoek 509, Wterfontein 765, Weestevrede 623, Welgegund 17, Wolfhuiskraal 45, Zaagkuidrift 46, Zoete inval 482, Zoete inval 484, Langavill 491, Driefontein 493, Noodhulp 492 Profense ya Northwest– KR
--------------------------	---

	Bedwana 5, De Putten 4, Doorndraai 12, Haakdoornbult 49, Haakdoornkraal 2, Leeuwkraal 50, Lochness 478, Rhenostervalei 47, Slagboom 1, Syferkuil 15, Tower 460, Transactie 3, Vogelstrispan 6, Vooruitzicht 7, Welgelegen 11, Worcester 481, Zwartboom 9
Lefelo la go romela dikgopelo (Ha)	Mo e ka bago di sekwere khilomithara tše 1'456
Selete sa bomaseterata	Bela-Bela le Moretele ka diprofenseng tša Limpopo le Northwest, ka go latelelana.
Monabo le tlhahlo ya ditaelo go tloga toropong ya kgwauswi	Lefelo la go dira di kgopelo le ka ba dikhilomithara tše 55 ka Leboa la toropo ya Pretoria, mo e ka bago dikhilomithara tše 18 ka Leboa la Hammanskraal, le mo e ka bago dikhilomithara tše 51 ka Leboa-bohlabela bja Brits, Afrika Borwa.

Go ya ka Karolo ya 79 ya Molao wa Tlhabollo ya Methopo ya Diminerale le Peteroleamo, 2002 (Molao wa 28 wa 2002) (MPRDA) ("Molao"), Crowne Royale Energy e dirile kgopelo ya go Nyakišiša peteroleamo mabapi le Dipolasa tše di fapafapanego (Dihlomathišo tša GPS yeo e lego mo senthareng: 25°3'5.40"S, 28°12'36.29"E) Dileteng tša bomaseterata tša Bela-Bela le Moretele ka diprofenseng tša Limpopo le North West, ka go latelelana. Lekalatirelo la Afrika Borwa la Peteroleamo (PASA) le amogetše kgopelo yeo e tsentswego ke Crowne Royale Energy (Pty) Ltd ("CRE") go nyakišiša peteroleamo.

Tsebišo e fiwa mabapi le Tshepetšo ya bakgathatema ba Setšhaba go ya ka MPRDA, Melawana ya Tekolo ya Tikologo (EIA) ya 2014, bjalo ka ge e fetošitšwe ka fase ga GN R326 le dikarolo tša molao tše di latelago:

- Molao wa go fetoša Molao ya Tikologo ya Bosetšhaba wa 2 wa 2022) (NEMLAA); le
- Karolo ya 38 ya Molao wa Methopo ya Bohwa bja Bosetšhaba, 1999 (Molao No. 25 wa 1999) (NHRA).



Seswantšho 1: Mmapa wa Lefelo leo le bontšhago Mollwane wa Tokelo ya dira Nyakišišo

Crowne Royale Energy (Pty) Ltd e šišinya go phula mekoti ya go bora e mebedi go ya go e meraro ka nako e tee, le go go le bjalo, go tloba le tsošološo ye e tšwelago pele. Mafelo ao go tlogo go phulwa mekoti go ona a tla fihlelelwa ka go šomiša ditsela tšeo di lego gona le diporo tšeo di lego gona mo dipolaseng. Sedirišwa se tlo phula melete ya botelele bja dimithara tše fetago tše 200 le yeo e ka fihlago botelele bja dimithara tše 700. Gape go ka nyakega gore go dirwe teko ya go pompa ya diiri tše 24 go bona khemikhale ya meetse ya go bopa malahla. Ke moka mekoti ya go bora yeo go tlogo go dirwa dinyakišišo go yona e tlo tswalelwa gabotse go sa emetše gore go tle go dirwe dinyakišišo tšeo gomme mekoti yeo e hweditšwego go se na selo e tlo tswalelwa ka samente.

Kgoro ya Methopo ya Diminerale le Enetše (DMRE) e tla nyaka tumelelo ya Tikologo gape, go ya ka Molao wa Bosetšhaba wa Taolo ya Tikologo (No. 107 wa 1998) (NEMA) wa Lekalatirole la Afrika Borwa la Peteroleamo (PASA), bakeng sa mediro ka Tsebišo ya Lenaneo la 2 (GN R517 ya 2021) le Tsebišo ya Lenaneo la 3 (GN R324 ya 2017) ya Melawana ya Tekolo ya Tikologo (EIA) ya 2014, bjalo ka ge go hlokega gore go dirwe tshepedišo ya go bala bogolo le ya EIA go tsebiša sephetho sa Tumelelo ya Tikologo go tšwa go DMRE, ka PASA. Go kgatha tema ga setšhaba ke karolo e bohlokwa ya tshepedišo ya kelo ya tikologo.

Ke kgonagalo ya gore kakanyo ya dinyakišišo tša rena e ka tle ya ama dilo tša bohwa bja rena mo lefelong le. Tshedimošo e ka hwetšagala (**29 Lewedi 2023**) mo tebelegong ya pego ya rena yeo e katleng ya ba le kगतello lefelong le la dinyakišišo ka go etela websaete ye www.thayatrading.co.za. Batho ka moka ba nago le kgahlego le bao ba ka bego ba bona go ka bago le tšhitišo ba ka tliša dikakanyo tša bona go tyre Thaya Trading Enterprise CC go tloga letšatšing la di **06 Dibatsela 2023**. Le bao ba ka hwetšang ba tlile go gatellwa ba tla fiwa nako ya gore ba tle ba tšeye karolo nakong ye etlang ebe e beilwe mo go tlabeng go hlakantšhwa ditaba tša lefelo le le babuši gotle ba eba le dikgopelo. Pego ya tebelelego gotšwa go batho ka moka etla hwetšagala gotloga ka di **29 Lewedi 2023** bokgobapuku bja setšhaba Ga-Motle, bokgobapuku bja Jericho, bokgobapuku bja setšhaba Letlhabile, masepala wa selegae wa Bela-Bela, bokgobapuku bja Mphebatho, ofisi ya masepala wa selegae ya Moretele, bokgobapuku bja setšhaba bja Papi Ntjane Bokgobapuku bja setšhaba bja Tladistad. Eupša o ka etela gape le www.thayatrading.co.za.

Bao ba nago le kgahlego le bao ba ekwang ba ka šitišwa ba mengwa go ingwadiša goba le kganetšo goba go oketša dikakanyo tša bona ka go ngwalela setsibi sa tekanyetšo ya tikologo yo a bolwetšego ka mo fase pele ga letšatši la di **06 Dibatsela 2023**, gomme tlabe ba ngwalela:

Setsibi sa tekanyetšo ya tikologo Kwindla Nobaza) | Thaya Trading Enterprise CC | 9705 Eerste Laan | Rooisand | Kathu | 8446 | Tel: 053 723 2257 | Cell: 071 959 9207 | Email: info@thayatrading.co.za

Setsibi sa lefa | Archaeological & Heritage Services Africa (Pty) Ltd | 8843 Odessa Crescent, Cosmo City Ext 7, Northriding 2188 | Email: e.matenga598@gmail.com | Cell: 073 981 0637

Molaodi wa lefa | South African Heritage Resources Agency | P.O. Box 4637, Cape Town 8000 | Tel: (021) 462 4502 | Fax: (021) 462 4509 | E-mail: info@sahra.org.za

21.1. Maikemišetšo

Maikemišetšo a protšeke ye ke go tsebiša PASA ka protšeke ye e šišintšwego ya go nyakišiša yeo e yago go dirwa ka Dileteng tša Maseterata tša Bela-Bela le Moretele ka diprofenseng tša Limpopo le North west, se se akaretša go phula didiba tša go nyakišiša tše pedi go ya go tše tharo le go hlokomela dilo tša ekonomi ya leago, setšo le tša biophysical tše di swanetšego go elwa hloko gabotse ge go dirwa mošomo wo wa go nyakišiša.

21.2. Megato ya Kgopelo ya protšeke ye e šišintšwego.

Kgopelo ya tumelelo ya tikologo go ya ka Go fetošwa ga Melao ya Taolo ya Tikologo ya Bosetšhaba ya 2 ya 2022 e rometšwe go Lekalatirelo la Afrika Borwa la Peteroleamo ka September 2023. .Crowne Royale Energy (Pty) Ltd e šišinya go phula mekoti e meraro ya go dira nyakišiša ka gare ga lefelo la protšeke. Lenaneo la mešomo leo le šišintšwego le tlo latela megato e latelago..

- Go lekola;
- Kgato ya go Kgobokanya;
- Kgato ya go Bora;
- Kgato ya go Phethagatša;
- Kgato ya go lekola Mokoti;
- Kgato ya go tlogela sediba; le
- Kgato ya Tsošološo.

21.2.1. Go lekola

Setsebi sa thutafase sa peteroleamo ke sona seo se tlogo go lekola mafelo ao go tlogo go borwa go ona. Mekoti yeo e ka phulwa ka bobedi ka bobedi goba e meraro mafelong a go se swane.

21.2.2. Kgato ya go Kgobokanya

Sedirišwa sa go phula mekoti se tlo sepela go dikologa lefelo la tirišo ka go šomiša ditsela tša phihlelelo tše di lego gona le ditsela tša neteweke.

21.2.2.1. Kgato ya go Bora

Go tlo dirišwa ditlabakelo tša go fapafapana go phula lefelo leo le kgethilwego botelele bja dimithara tše 700, mokoting o mongwe le o mongwe.

Ka morago ga go phula, go tlo ba le tsošološo yeo e tšwelago pele. Lešoba le lengwe le le lengwe leo le phutšwego leo le lemogilwego le tlo khupetšwa le go samentelwa bakeng sa dinyakišišo tše dingwe.

21.2.3. Kgato ya go Phethagatša

Go tlo rengwa dihlaire dirwa bakeng sa sediba se sengwe le se sengwe go hwetša lithology ya sona.

21.2.4. Kgato ya go lekola Mokoti

Diteko tša mekoti di akaretša go ela ditekanyetšo tše di fapa-fapanego, go akaretša le tekanyo ya go elela, poreša le sebopego sa seela. Datha yeo e kgobokeditšwego nakong ya teko ya mekoti e tla šomišwa go laetša mehola yeo e ka bago gona ya mokoti, boleng bja letamo, le mathata afe goba afe ao a ka bago gona goba mathata ao a ka hlokago go rarollwa.

Go lekolwa ga mekoti yeo go tlo thuša ka dilo tše dilatelago:

- Go bontšha bothata bjo bo ka bago gona ka mokoti goba letamo, go swana le tshenyoye ya sebopego goba go ba gona ga meetse goba kgase. Boitsebišo bjoo bo ka šomišwa go kaonafatša tšweletšo le go fokotša ditshenyegelo;
- Go fana ka datha ya bohlokwa mabapi le tšweletšo ya mokoti, yeo e ka šomišwago go kaonafatša dilo tšeo di tšweletšwago le go ntšha oli goba kgase;
- Teko ya mokoti e ka fana ka boitsebišo bjo bo bohlokwa ka ga maemo a letamo, go swana le go tsenelela le porosity ya sebopego. Boitsebišo bjoo bo ka šomišwa go hlama maano a go kaonafatšwa ga go tsošološa oli

21.2.5. Kgato ya go tlogela sediba

Ka go netefatša gore ga go na tshenyoye nngwe ya tikologo yeo e diregago ka lebaka la mediro ye e šišintšwego, go tla šomišwa tsela ye e rulagantšwego ya go tlogela mekoti ya go bora, yeo e akaretšago ka go tswalela ka mo go atlegilego, mafelo ka moka ao go lekolwago peteroleamo go ona le go thibela gore e se ke ya tšhaba e diriša meetse ka go elela. Se se lemogegago ke gore diela tša go bopa di swanetše go arolwa. Samente polaka-ditlabakelo-mošomo e tlo dirišwa. Leano la seketšhe leo le bontšhago mafelo a mekoti yeo e lemogilwego le yeo e tlogetšwego e tlo romelwa go mediro ya go nyakišiša ka morago ga PASA; le ge go le bjalo setifikeiti sa go tswalela mekoti yeo se swanetše go hwetšwa, ge go hlokega.

21.2.6. Kgato ya go tloša

Ge mediro ka moka e fedile lefelong leo, didirišwa ka moka, metšhene le ditulose ka moka di tla ntšhetšwa ka ntle ga lefelo. Ka morago ga moo, go tlo dirwa megato ya go tsošološa go fihla maamong ao a amogelelegago go mong wa naga.

22. Lefelo leo le Lebantšwego le Mafelo a Mangwe.

Lefelo : Go na le mafelo ao a lemogilwego bjalo ka mafelo ao a ka dirišwago ka gare ga lefelo la tirišo ya nyakišišo. Megato e mengwe e tlo dirišwa go lekola kgato ya Scoping le Kgato ya Tekolo ya Tikologo. Mafelo ao a ka bago kotsi a tlo tlogelwa gomme diteko tšeo di dirilwego ke ditsebi ka lefelo leo di tlo ngwala ka gare ga pego.

Theknolotši – Tšhomišo ya sedirišwa sa go phula : Go šišinywa gore Crowne Royale Energy e šomiše sedirišwa sa go phula go dira mediro mabapi le protšeke ye e šišintšwego.

23. DILO TŠEO DI HLOKAGALAGO LE TŠEO DIGANYOGEGAGO

Afrika Borwa, dikarolo tše di fapanego tša Afrika le dikarolo tše dingwe tša lefase di lebeletšana le ditlhohlo tše di amanago le dilo tša enetši. Mehola ya peteroleamo e fana ka methopo e mengwe e bohlokwa ya enetše. Ditlhabollo tša go swana le ye yeo e šišintšwego ya go nyakišiša peteroleamo di na le bokgoni bja go thuša go laetša ge eba dibopego tša thutafase di ka ba le peteroleamo le oli ya boleng bjo bo ka thušago maemo a ekonomi goba go se bjalo.

24. Nako ya go phula mekoti le go dira diteko

Ka morago ga lenaneo la go phula go tlo dirwa diteko. Megato ye e mebedi e tlo latelwa dikgwedi tše mmalwa. Go diriša lenaneo leo mabapi le mekoti yeo e swanetšego go phulwa go akaretša tshepedišo ye e rulagantšwego ya go netefatša gore kgato ye e dirwago e tšweletša dipoelo tše dibotse/dipoelo tša megato e fetilego di bontšha ge eba kgato ye e latelago e ka dirwa. Go letetšwe gore go phula lefelong le lengwe le le lengwe go dirwe mo e ka bago ka dikgwedi tše tharo.

25. Go fihlelela Lefelo Leo

Go tlo dirišwa megato yeo e lego molaong go fihlelela mafelo ao go tlabego go šomelwa go ona lefelong la tirišo ya nyakišišo.

26. Go Hlokomelwa ga Tikologo

Mekgwa yeo e ka dirišwago go hlokomela lefelo leo e tlo kgoboketšwa, e tlo ba ka fase ga ga tshepedišo ya go tšea karolo ga setšhaba gomme ya romelwa go DMRE, ka PASA gore e lekolwe le go dira diphetho.

27. GO NYAKIŠIŠA GOBA TŠWELETŠO YA KA MOSO

Se se lemogegago ke gore, boitsebišo bjo bo lego ka gare ga pampišana bo amana le kgopelo ya tokelo ya nyakišišo mabapi le mediro ya go phula le go dira diteko. Gore go tle go kgonege go dira mediro e e mengwe nakong e tlogo,

motšweletši goba mothekgi o swanetše go hwetša tumelelo go tšwa go DMRE, ka PASA. Bakeng sa boitsebišo bjo bontši goba dintlha mabapi le tlhabollo ye e šišintšwego, ikgokaganye le Mošomi wa Tekolo ya Tikologo yoo boitsebišo bja gagwe bo filwego letlakaleng la mafelelo la tokomane ye gomme o kgopele dikopi tša Pego ya Bogolo le Dipego tša Tekolo ya Tikologo.

28. Motheo wa Tikologo wa Biophysical

8.1. Di-setting tša Thutafase tša Selete

Thutafase ya Selete sa Waterberg e bopilwe ka Dihlopha tše hlano tše di fapanego tša Thutafase ya Super. Lefelo la tirišo le bopšwa ke dihlopha tša Waterberg le Lebowa, ka sehlopha sa Beaufort sa tatelano ya Karoo yeo e lego karolo ya sa selete sa ka leboa.

Tlelaemete: Lefelo la tirišo la go dira nyakišišo le na le monola ganyane ebile le fodile go feta selete sa ka leboa sa Mmasepala wa Selete sa Waterberg.

Mabu le bokgoni bja naga: Lefelo la tirišo la go dira nyakišišo le na le mehuta ya mmu ye e fapanego, go akaretšwa mabu a go hloka sebopego le ao a fapanago ka sebopego.

Thuto ya meetse: Go na le dinoka tšeo di phatšago seleteng gomme methopo ye mengwe ya meetse e ile ya lemogwa ka gare ga lefelo la protšeke.

Meetse a ka fase ga lefase: Mekoti ya go bora e tloga e le gona ka gare ga lefelo la tirišo; lega go le bjalo, e dirišwa ke dikhamphani tša poraebete.

Flora: Lefelo la protšeke Le wela ka fase ga Savanna Biome gomme le arotšwe bjalo ka Springbovlakte Thornveld, kudu ka Limpopo, North West.

Boleng bja Moya: Boleng bja moya wa tikologo bja lefelo la protšeke ka kakaretšo bo na le mathatanyana ka ge go na le mediro ya meepo le ya intasteri ye e tšwelago pele ka dileteng.

28.1. TIKOLOGO YA SETŠO

Bohwa/Methopo ya Setšo: Bohwa le Methopo ya Setšo e tloga e le gona ka gare ga lefelo la tirišo. Methopo ka moka ye e lemogilwego e tlo ba karolo ya pego ya setsebi.

Methopo ya palaeontological Lefelo le la protšeke le na le marope a mantši kudu.

28.2. TIKOLOGO YA EKONOMI YA LEAGO

Ekonomi ya leago : Ditšhaba tša Bela-Bela le Moretele go na le kgonagalo ya gore di ame ke tlabollo ye e šišintšwego, kudu ge tlabollo ye ya ka moso e tlo thoma go direga.

Tšhomišo ya naga: Lefelo la tirišo ya go dira nyakišišo le šomišwa medirong ya intasteri, ya temo le meepo gare ga dilo tše dingwe tše di lego gona.

29. DITHUTO TŠA DITSEBI TŠEO DI DIRIŠWAGO GO TSEBIŠA TSHEPEDIŠO YA TUMELELO YA TIKOLOGO

Dikelo tše di latelago tša ditsebi di tla dirwa bjalo ka karolo ya tshepedišo ya EIA:

- Dikelo tša Mehutahuta ya Diphedi tša ka Meetseng;
- Tekolo ya Geohydrology;
- Tekolo ya dilo tša Bohwa tša setšo;
- Tekolo ya mašhata le di tshikginyego/tshitshinyego;
- Tekolo ya Palaeontology (Desktop); le
- Dikelo tša Mehutahuta ya Diphedi tša Lefaseng.

30. TUMELELO YA TIKOLOGO LE TSHEPEDIŠO YA KA KARETŠO YA SETŠHABA

30.1. TSHEPEDIŠO YA TUMELELO YA TIKOLOGO

Tshepetšo ya EIA e fa tshedimošo ka ga protšeke ye, yeo e akaretšago dikarolo tša tshepedišo le tikologo yeo protšeke e šišintšwego ka tšona. E hlaola le go sekaseka, ka therišano le di-I&AP, ditlamorago tše mpe le tše botse tše di ka bago gona tša biophysical, setšo, le ekonomi ya leago

Tshepetšo ya kelo ya tikologo e bolela gape le ka magato a taolo ao a nyakegago go fokotša ditlamorago go fihla maemong ao a amogelelegago gomme e akaretša dinyakwa tša mananeo a go hlokomela (moo go nyakegago). Megato ya tshepedišo le dinako tše di akantšwego di filwe ka mo fase:

Megato	Magoro	Aetheme
Kgato ya 1	Pele ga tirišo	Kopano ya pele ga kgopelo le PASA
		Go hlaolwa ga di-I&AP le tihabollo ya polokelo ya tshedimošo ya protšeke.
		Tsebiša di-I&AP ka ga protšeke (ka dipapatšo tša kuranta, ditsebišo tša sebaka, SMS/ WhatsApp, le tokoma)
		Dirišana le di-I&AP ka dikopano le ditherišano.
Kgato ya 2	Scoping	Kgoboketša Pego ya Scoping le kakaretšo.
		Romela kgopelo ya EA go DMRE.
		Aba Pego ya Scoping le di-I&AP gore di lekolwe (nako ya tshekatsheko ya matšatši a 30).
		Romela Pego ya Scoping (go akaretšwa ditshwayotshwayo tša I&AP) go DMRE gore e sekaseke le go fa ditš
Kgato ya 3	EIA le EMPr	Dira dinyakišišo/dithuto tša ditsebi tše di šišintšwego.
		Kgoboketša EIA le EMPr le kakaretšo.
		Aba EIA le EMPr go di-I&AP le balaodi ba taolo bakeng sa tshekatsheko (nako ya tshekatsheko ya matšatši a 30).
		Romela EIA le EMPr (go akaretšwa ditshwayotshwayo tša I&AP) go DMRE gore e tšee diphetho (nako ya go
		Sepediša sephetho sa DMRE go di-I&AP ge o šetše o se hweditše.

TSHEPEDIŠO YA GO TŠEA KAROLO YA SETŠHABA

Maikemišetšo a tshepedišo ya go tšea karolo ga setšhaba ke go tsebiša di-I&AP ka ga protšeke ye e šišintšwego, go ba nea tshedimošo ye e lebanego le go fa sebaka sa go tšweletša ditaba goba dipelaelo mabapi le protšeke ye e šišintšwego. Tshepetšo ya go tšea karolo ga setšhaba e tla dirwa go ya ka dinyakwa tša Kgaolo ya 6 ya Melawana ya EIA ya 2014, bjalo ka ge e fetošitšwe.

Di-I&AP tšeo di amegago tshepedišong ya EIA di bontšhitšwe ka mo tlase:



Ke kgonagalo ya gore kakanyo ya dinyakišišo tša rena e ka tle ya ama dilo tša bohwa bja rena mo lefelong le. Tshedimošo e ka hwetšagala (**03 Diphlane 2023**) mo tebelelegong ya pego ya rena yeo e katleng ya ba le kगतello lefelong le la dinyakišišo ka go etela websaete ye www.thayatrading.co.za. Batho ka moka ba nago le kgahlego le bao ba ka bego ba bona go ka bago le tšhitišo ba ka tliša dikakanyo tša bona go tyre Thaya Trading Enterprise CC go tloga letšatšing la di **07 Dibatsela 2023**. Le bao ba ka hwetšang ba tlile go gatellwa ba tla fiwa nako ya gore ba tle ba tšeye karolo nakong ye etlang ebe e beilwe mo go tlabeng go hlakantšhwa ditaba tša lefelo le le babuši gotle ba eba le dikgopelo. Pego ya tebelelego gotšwa go batho ka moka etla hwetšagala gotloga ka di **03 Diphlane 2023** bokgobapuku bja setšhaba Ga-Motle, bokgobapuku bja Jericho, bokgobapuku bja setšhaba Letlhabile, masepala wa selegae wa Bela-Bela, bokgobapuku bja Mphe batho, ofisi ya masepala wa selegae ya Moretele, bokgobapuku bja setšhaba bja Papi Ntjane Bokgobapuku bja setšhaba bja Tladistad. Eupša o ka etela gape le www.thayatrading.co.za.

Bao ba nago le kgahlego le bao ba ekwang ba ka šitišwa ba mengwa go ingwadiša goba le kganetšo goba go oketša dikakanyo tša bona ka go ngwalela setsibi sa tekanyetšo ya tikologo yo a bolwetšego ka mo fase pele ga letšatši la di **07 Dibatsela 2023**, gomme tlabe ba ngwalela:

Setsibi sa tekanyetšo ya tikologo Kwindla Nobaza) | Thaya Trading Enterprise CC | 9705 Eerste Laan | Rooisand | Kathu | 8446 | Tel: 053 723 2257 | Cell: 071 959 9207 | Email: info@thayatrading.co.za

Setsibi sa lefa | Archaeological & Heritage Services Africa (Pty) Ltd | 8843 Odessa Crescent, Cosmo City Ext 7, Northriding 2188 | Email: e.matenga598@gmail.com | Cell: 073 981 0637

Molaodi wa lefa | South African Heritage Resources Agency | P.O. Box 4637, Cape Town 8000 | Tel: (021) 462 4502 | Fax: (021) 462 4509 | E-mail: info@sahra.org.za

PETROLEUM AGENTSKAP SUID-AFRIKA VERW. NR.: 12/3/345 ER

Letšatšikgwedi			
Mokgahlo / Lefapha (<i>Ge go hlokega</i>)			
Boitsebišo bja motho			
Thaetlele		Leina le Sefane	
Aterese ya Poso			
	Khoutu ya Poso		
Aderese ya mo o dulago			
	Khoutu ya Poso		
Dinomoro tša mo o šomago gona			
Dinomoro tša gago			
Imeile ya gago			
Mong wa naga le Modudi wa naga			
Bontšha / goba laetša ge eba mollwane wa thoto ya gago o ka gare ga lefelo la kgopelo goba aowa, hle re fe Leina la gago la Polase & nomoro goba karolo goba nomoro ya Erf			
Mohuta / Tlhago ya Kgahlego			(Ee / Aowa / NA)
Hle ngwadiša Kgoro/Mokgatlo/Motho ka noši bjalo ka Mokgatlo wo o nago le Kgahlego le yo a Amegago (I&AP) bakeng sa tlhabollo ye e šišintšwego			
Nna/moemedi ke rata go amogela khophi ya Dipego tša Tekolo ya Tikologo yeo e amanago le tlhabollo ye e šišintšwego.			
Mokgwa wo o kgethilwego wa kgokagano (<i>Swaya ka X</i>)			
Go utolla			
Nna, _____ yo a saennego ke utolla gore kgahlego efe goba efe ya thwii ya kgwebo, ya ditšhelete, ya motho le / goba efe goba efe ye nngwe yeo nka bago le yona go tumelelo goba go gana ga kgopelo yeo e amanago le tlhabollo ye e šišintšwego.			
Mosaeno: _____ Letšatšikgwedi _____			
Bakeng sa Tšhomišo ya Ofisi goba ya ka Gare Feela			
Nomoro ya Tšhupetšo		Mosaeno wa motho wa go ahlaahla boitsebišo	

Hle ikwe o lokologile go kgomaretša mametletšo ge e ba o rata bjalo.

Ke na le ditšhupetšo goba ditshwayotshwayo tše di latelago tšeo ke swanetšego go di romela mabapi le tlhabollo ye e šišintšwego:

Ke na le ditšhupetšo goba tshwaelo ye e latelago yeo ke swanetšego go e romela yeo e lego mabapi le tshepedišo ya go tšea karolo ga setšhaba:

Hle abelana ka maina ka moka le dintlha tša kgokagano tša batho ba bangwe bao ba ka bago le kgahlego ka tlhabollo ye e šišintšwego le tshepedišo ye e tšwelago pele ya kgopelo ya tumelelo ya tikologo:

HLE BUŠETŠE FOROMO YA NGWADIŠO LE THEMPLETE TŠEO DI TLADITŠWEGO KA MORAGO GA LABOBEDI, LA 07 DIBATSELA 2023 GO:

Thaya Trading Enterprise CC

Kwindla H. Nobaza

Nomoro ya Sele & WhatsApp: 071 959 9207

Imeile: info@thayatrading.co.za

Tshedimošo ya Botho ya Mekgatlo ye e nago le Kgahlego le ye e Amegago e tlo šomišwa ka maikemišetšo a go arabela ditshwayatshwayo tša bona goba dipelaelo tša bona gabotse go mmadi le go Bolaodi bjo bo nago le Bokgoni. Boitsebišo bja gago bja motho ka noši bo tlo bolokwa ka gare ga polokelo ya dilo tša tshedimošo.	Na o dumela gore tshedimošo ya gago ya motho ka noši e šomišwe ka go Pego ya Tekolo ya Tikologo le go bolokwa ka go Dathabeise?	
	Ee	Aowa

TOKUMENTE YA TSHEDIMOSETSO YA LEMORAGO

CROWNE ROYALE ENERGY (PTY) LTD: TALETSO YA GO IKWADISA JAAKA MOTHO YO O KGATLHEGANG LE YO O AMEGANG, KITSISO YA DITSAMAISO TSA GO DIRA KOPO YA TETLA YA GO DIRISA TIKOLOGO LE YA TSHWANELO YA GO BATLISISA, LE KITSISO YA GO NNA TENG GA PEGO YA TIRO E E KA SEKASEKWANG KE SETŠHABA
PETROLEUM AGENCY SOUTH AFRICA REF. NO.: 12/3/345 ER

31. MATSENO

Go ya ka kopo ya Mokaedi wa Crowne Royale Energy (Pty) Ltd, khampani e e tlhomilweng kafa tlase ga melao ya Repaboliki ya Aforika Borwa, ka nomoro ya boikwadiso 2015/126135/07, Thaya trading Enterprise e laola tsamaiso ya go dira kopo ya Tetla ya go Dirisa Tikologo ka maikaelelo a go dira kopo ya Tshwanelo ya go Batlisisa lookwane lo lo tswang mo mafikeng mo Dipolasing tse di farologaneng (GPS Co-ordinates tse di mo magareng: 25°3'5.40"S, 28°12'36.29"E) mo Dikgaolong tsa Semolao tsa Bela-Bela mo Porofenseng ya Limpopo, le Moretele mo Porofenseng ya Bokone Bophirima, go ya ka Karolo 79 ya Molao wa Tlhabololo ya Metswedi ya Diminerale le Petoroliame, wa 2002 (Molao 28 wa 2002) (MPRDA) ("Molao").

MODIRA KOPO: CROWNE ROYALE ENERGY (PTY) LTD

MOGAKOLODI: THAYA TRADING ENTERPRISE CC (Motho yo go lkgolaganngwang le Ene: Kwindla Nobaza)

Mog: 053 723 2257

Nomoro ya Selula & WhatsApp: 071 959 9207

Imeili: info@thayatrading.co.za

KOPANO E GO TLA NNANG LE BATSAYAKAROLO BOTLHE MO GO YONE (GO AKARETSA BATHO BA BA KGATLHEGANG LE BA BA AMEGANG)

BELA-BELA	MORETELE
Date: 24 Diphlane 2023 (Labobedi) Nako: 14h00	Date: 25 Diphlane 2023 (Laboraro) Nako: 14h00
Venue: Holo ya setshaba ya Bela-Bela, Masepala wa selegae wa Bela-Bela, Waterberg District Municipality, Limpopo, South Africa.	Venue: Holo ya setshaba ya Moretele, Masepala wa selegae wa Moretele, Bojanala District Municipality, North West, South Africa

TSAMAISO YA GO NNA LE SEABE GA SETŠHABA: Tsamaiso ya go nna le seabe ga setšhaba le yone e ka tsewa jaaka Tsamaiso ya go lkgolaganya le Batsayakarolo, ka kakaretso. Tsamaiso eno e naya Batho ba ba Kgatlhegang le ba ba Amegang [Interested and Affected Parties (I&AP's)] tshono ya go nna le seabe mo tirong ya tlhabololo ya porojeke e e akantshitsweng. Batho ba ba Kgatlhegang le ba ba Amegang ba ka romela dikakgelo tse di malebana le porojeke e e akantshitsweng mo teng ga nako e e beilweng. Ba nna le tshono ya go newa tshedimosetso e e kaga tlhabololo ya e e akantshitsweng. Fa Batho ba ba Kgatlhegang le ba ba Amegang ba sena go newa tshedimosetso, ba ka nna le seabe mo tsamaisong ya tetla ya go dirisa tikologo. Ditshwaelo kgotsa dikakgelo tsa bone di tla akanyediwa ke Moitseanape wa Tshekatsheko ya Tikologo ka nako ya fa a sekaseka ditlamorago, gareng ga dilo tse dingwe. Go tswa foo, dikakgelo tse

di rometsweng di akanyediwa ke Molaodi yo o Tshwanelang (Lefapha la Metswedi ya Diminerale le Maatla, ka Setheo sa Petoroliamo sa Aforika Borwa)

BATHO BA BA KGATLHEGANG LE BA BA AMEGANG KE BOMANG: Batho ba ba Kgatlhegang le ba ba Amegang ba akaretsa maloko a setšhaba, beng ba lefatshe / banni ba lefatshe, baagisani, mekgatlho ya puso, dithlopha tsa baagi, diforamo, dikhomishene le ditheo.

SEABE SA BATHO BA BA KGATLHEGANG LE BA BA AMEGANG: Batho ba ba Kgatlhegang le ba ba Amegang ba itsisiwe fano ka ditiro tse di akantshiwang tsa go Battisisa lookwane lo lo tswang mo mafikeng, e bile ba lalediwa gore ba nne le seabe mo nakong yotlhe ya Kopo e e Kopanetsweng ya Tetla ya go Dirisa Tikologo.

Batho ba ba Kgatlhegang le ba ba Amegang ba ka nna le seabe mo tsamaisong ya go dira kopo ya Tetla ya go Dirisa Tikologo ka go dira dilo tse di latelang:

- Go sekaseka tshedimosetso, dipego le ditokumente tsotlhe tse di kaga porojeke e e akantshitsweng;
- Go ntsha ditshwaelo, go dira dikakgelo, go botsa dipotso tse di tshwanetseng go romelwa go Moitseanape wa Tikologo;
- Go nna le seabe ka go nna gone mo dikopanong tse di rulagantsweng; le
- Go abelana tshedimosetso le batsayakarolo ba bangwe.

LENAANE LA DITIRO TSE DI AMEGANG:

Molawana 517 (2021) wa Kitsiso ya Puso –**Lenaane la Kitsiso 2**; Tiro 18 | Molawana 324 wa Kitsiso ya Puso – Lenaane la Kitsiso 3; Tiro 12 e. Limpopo | Molawana 324 wa Kitsiso ya Puso – Lenaane la Kitsiso 3; Tiro 12 h. Bokone Bophirima

TLHALOSO YA LEFELO:

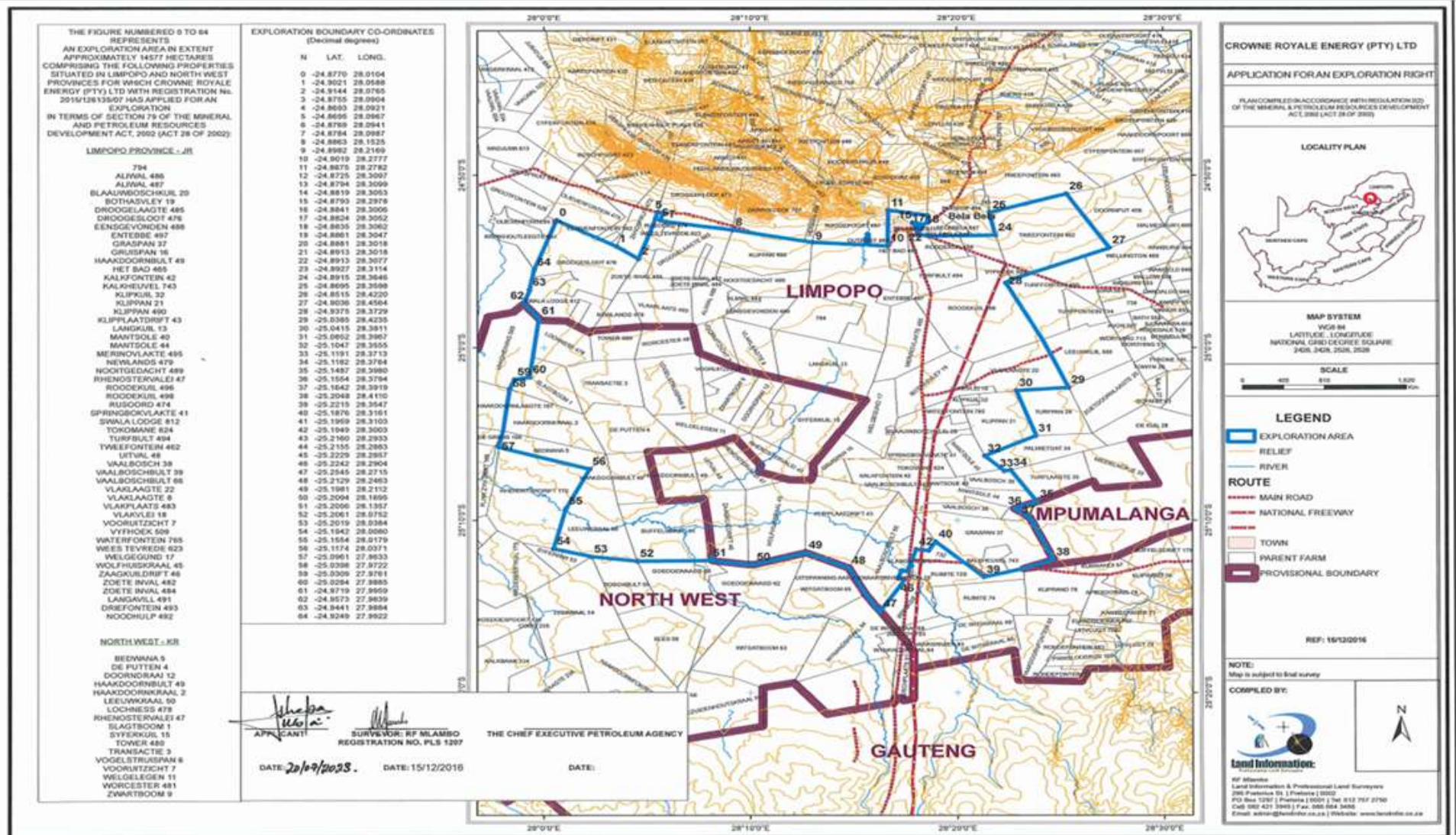
Maina a Dipolasi:	Porofense ya Limpopo; 794, Aliwal 486, Aliwal 487, Blaauwboschkuil 20, Bothasvley 19, Droogelaagte 485, Droogelaadte 485, Ensgevonden 488, Entebbe 497, Graspan 37, Gruispan 16, Haakdoornbult 49, Het bad 465, Kalkfontein 42, Kalkheuvel 743, Klipkuil 32, Klippan 21, Klipplaatdrift 43, Langkuil 13, Mantsole 40, Merinovlakte 495, Newlands 479, Noortgedacht 489, Rhenostervalei 47, Roodekuil 496, Roodekuil 498, Rusoord 474, Springbokvlakte 41, Swala Lodge 812, Tokomane 624, Turfbult 494, Tweefontein 462, Uitval 48, Vaalbosch 38, Vaalboschbuilt 39, Vaalboschbuilt 66, Vlaklaagte 22, Vlaklaagte 8, Vlakplaats 483, Vlakvlei 18, Vooruitzicht 7, Vyfhoek 509, Wterfontein 765, Weestevrede 623, Welgegund 17, Wolfhuiskraal 45, Zaagkuidrift 46, Zoete inval 482, Zoete inval 484, Langavill 491, Driefontein 493, Noodhulp 492 Porofense ya Bokone Bophirima – KR
--------------------------	---

	Bedwana 5, De Putten 4, Doorndraai 12, Haakdoornbult 49, Haakdoornkraal 2, Leeuwkraal 50, Lochness 478, Rhenostervalei 47, Slagtboom 1, Syferkuil 15, Tower 460, Transactie 3, Vogelstrispan 6, Vooruitzicht 7, Welgelegen 11, Worcester 481, Zwartboom 9
Lefelo la Tiro Kopo (Ha)	Mo e ka nnang disekwerekilometara di le 1'456
Kgaolo ya semolao:	Bela-Bela mo Porofenseng ya Limpopo, le Moretele mo Porofenseng ya Bokone Bophirima.
Sekgala le tsela e e tswang mo toropong e e gaufi	Lefelo la tiro kopo le bokgakala jo bo ka nnang 55 km Bokone jwa toropo ya Pretoria, mo e ka nnang 18 km Bokone jwa Hammanskraal, mo e ka nnang 51 km Bokone Botlhaba jwa Brits, Aforika Borwa.

Go ya ka Karolo 79 ya Molao wa Tlhabololo ya Metswedi ya Diminerale le Petoroliamo, wa 2002 (Molao 28 wa 2002) (MPRDA) ("Molao"), Crowne Royale Energy e dirile kopo ya Tshwanelo ya go Batlisisa lookwane lo lo tswang mo mafikeng mo Dipolasing tse di farologaneng (GPS Co-ordinates tse di mo magareng: 25°3'5.40"S, 28°12'36.29"E) mo Dikgaolong tsa Semolao tsa Bela-Bela mo Porofenseng ya Limpopo, le Moretele mo Porofenseng ya Bokone Bophirima. Setheo sa Petoroliamo sa Aforika Borwa [Petroleum Agency South Africa (PASA)] se amogetse kopo e e dirilweng ke Crowne Royale Energy (Pty) Ltd ("CRE") ya go batlisisa lookwane lo lo tswang mo mafikeng.

Ka jalo, kitsiso e a neelwa ka Tsamaiso ya Botsayakarolo jwa Setšhaba go ya ka MPRDA, Melawana ya Tshekatsheko ya Ditlamorago mo Tikologong [Environmental Impact Assessment (EIA)] ya 2014, jaaka e fetotswe kafa tlase ga GN R326 le dikarolwana tse di latelang tsa molaotheo:

- Molao wa Bosetšhaba wa Tlhabololo ya Molao ya Tikologo, Molao 2 wa 2022) (NEMLAA); le
- Karolo 38 ya Molao wa Bosetšhaba wa Metswedi ya Ngwaoboswa, wa 1999 (Molao 25 wa 1999) (NHRA).



Setshwantsho 1: Mmapa wa Lefelo o o bontshang Melelwane ya Tshwanelo ya go Batlisa

Crowne Royale Energy (Pty) Ltd e akantsha go epa bobotlana didiba tse 2 go ya go tse 3 ka nako e le nngwe; le fa go ntse jalo, e dira tiro e e gatelang pele ya go tsosolosa. Mafelo a go epa a tla tlathlobiwa go dirisiwa ditsela le ditselana tsa polase tse di setseng di le gone. Motšhine wa go epa o tla epa boteng jo bo fetang 200m mme o ka epa go fitlha go 700m. Gape go ka tlhokega gore go dirwe tiro ya diura di le 24 ya tlathlho ya go pompela kwantle go tlhomamisa khemiseteri ya metsi a go bopega ga magala. Go tswa foo, didiba tse di supilweng e le tse di kgatthegelwang di khurumetswa ka nako ya fa dipatlisiso tse di oketsegileng di ntse di dirwa kgotsa tsa tswalwa ka samente fa di sa tlhole di tlhokega.

Gape Tetla ya go Dirisa Tikologo e tllile go batiwa ke Lefapha la Metswedi ya Diminerale le Maatla [Department of Mineral Resources and Energy (DMRE)], ka Setheo sa Petoroliamo sa Aforika Borwa (PASA) go ya ka Molao wa Bosetšhaba wa Tsamaiso ya Tikologo (Molao 107 wa 1998) (NEMA), ya ditiro tse di mo Lenaaneng la Kitsiso 2 (GN R517 ya 2021) le Lenaane la Kitsiso 3 (GN R324 ya 2017) la Melawana ya Tshekatsheko ya Ditlamorago mo Tikologong (EIA) ya 2014, jaaka e fetotswe go ya ka tiro le tsamaiso ya EIA e e dirwang go itsise ka tshwetsho ya Tetla ya go Dirisa Tikologo go tswa go DMRE, ka PASA. Botsayakarolo jwa setšhaba ke karolo ya bothokwa ya tsamaiso ya tshekatsheko ya tikologo. Go ka direga gore ditiro tse di lebelelsweng tse di akantshitsweng di ame didirisiwa tsa ngwaoboswa ya setso tse di ka tswang di le mo lefatsheng leo. O ka kgona go fitlhelela (go tloga ka **29 Lwetse 2023**) Dipego tsa Tikologo (Pego ya Tshekatsheko gape le Pego ya Tshekatsheko ya Ditlamorago mo Tikologong) ka go ya webosaeteng ya www.thayatrading.co.za go di fitlhelela ka tsela e e tokafetseng. Batho botlhe le Batsayakarolo ba ba Nang le Kgatlhego le ba ba Amegang [Interested and Affected Parties (I&APs)] ba lalediwa gore ba romele ditokelelo kgotsa ditshwaelo dipe fela tsa bone go Thaya Trading Enterprise go tloga ka letlha le kitsiso eno e dirilweng ka lone go fitlha (ka kgotsa pele ga) **07 Ngwanatsele 2023**. Batsayakarolo botlhe ba ba Nang le Kgatlhego le ba ba Amegang ba ba kwadisitsweng ba tllile go newa tshono ya go nna le seabe mo nakong yotlhe ya kopo ya tsamaiso e e Kopanetsweng ya Tiriso ya Tikologo. Khopi ya Pego ya Tshekatsheko e teng go ka sekasekwa ke setšhaba (go tloga ka **29 Lwetse 2023**) kwa Laeboraring ya Ga-Motle, Laeborari ya Jericho, Laeborari ya Letlhabile, dikantorong tsa masepala wa selegae wa Bela-Bela Laeborari ya Mphebotho, dikantorong tsa masepala wa selegae wa Moretele, Laeborari ya Papi Ntjane, le kwa Laeboraring ya Tladistad. Gape, etela www.thayatrading.co.za go e iponela yone.

Batsayakarolo bape fela ba ba Nang le Kgatlhego kgotsa ba ba Amegang ba a lalediwa fano go ikwadisa mme dikganetsano dipe fela kgotsa ditokelelo dipe fela di tshwanetse go bolelelwa kgotsa go kwalelwa Mankge wa Tshekatsheko ya Tikologo yo o kwadilweng fa fatshe pele ga **07 Ngwanatsele 2023**, gore a e ele tlhoko:

Mankge wa Tshekatsheko ya Tikologo (Kwindla Nobaza) | Thaya Trading Enterprise | 9705 Eerste Laan | Rooisand | Kathu | 8446 | Mog: 053 723 2257 | Mog: 071 959 9207 | Imeili: info@thayatrading.co.za

Mankge wa Ngwaoboswa | Archaeological & Heritage Services Africa (Pty) Ltd | 8843 Odessa Crescent, Cosmo City Ext 7, Northriding 2188 | Imeili: e.matenga598@gmail.com | Founo Selula: 073 981 0637

Mankge wa Ngwaoboswa | South African Heritage Resources Agency | P.O. Box 4637, Cape Town 8000 | Mog: (021) 462 4502 | Fekese: (021) 462 4509 | Imeili: info@sahra.org.za

31.1. Maikaelelo le maitlhommo

Boikaelelo jwa porojeke eno ke go itsise PASA ka porojeke e e akantshitsweng ya go batlisisa e e tlleng go dirwa mo Dikgaolong tsa Semolao tsa Bela-Bela mo porofenseng ya Limpopo, le Moretele mo porofenseng ya Bokone Bophirima, mme seno se akaretsa go epa didiba tse 2 go ya go tse 3 tsa patlisiso gammogo le patlisiso ya loago le ikonomi, setso le ya thutotshelo e e tlhokang go akanyediwa sentle fa go dirwa tiro ya patlisiso.

31.2. Tsamaiso ya go Dira Kopo ya porojeke e e akantshitsweng.

Kopo ya tetla ya go dirisa tikologo go ya ka Molao wa Bosetšhaba wa Tlhabololo ya Melao ya Tsamaiso ya Tikologo, Molao 2 wa 2022, e ile ya romelwa go Setheo sa Petoroliamo sa Aforika Borwa ka September 2023. Crowne Royale Energy (Pty) Ltd e akantsha go epa didiba tsa patlisiso tse di fitlhang go tse 3 mo teng ga lefelo la porojeke. Thulaganyo ya ditiro tse di akantshitsweng e ka akaretsa magato a a latelang.

- Go Batla Sediba;
- Legato la Tiro;
- Legato la go Epa;
- Legato la go Dirisa Sediba;
- Legato la go Tlhatlhoba Sediba;
- Legato la go Tlogela Sediba; le
- Legato la go Tsosolosa.

31.2.1. Go batla sediba identification

Go batla mafelo a sediba go tla dirwa ke baithuti ba maje ba lookwane lo lo tswang mo mafikeng. Didiba di tllile go epiwa di le pedi kgotsa di le tharo ka mekgwa e e gasameng.

31.2.2. Legato la Tiro

Motšhine wa go epa o tllile go tsamayatsamaya mo lefelong le go dirilweng kopo mo go lone, go dirisiwa ditsela le mafaratlhatlha a ditsela a a setseng a le gone.

31.2.2.1. Legato la go Epa

Dikonopo tsa go epa tsa bogolo jo bo farologaneng di tllile go dirisiwa go simolola mo boalong jwa lefatshe jo bo phepafaditsweng go fitlha go palogotlhe ya boteng jo bo fitlhang go 700m sediba sengwe le sengwe.

Morago ga go epa, tsosoloso ya kgato ka kgato ya ka gangwe e tllile go dirwa. Sediba sengwe le sengwe le tla tswalwa le go tshelwa samente go dira dipatlisiso tse di oketsegileng.

31.2.3. Legato la go Dirisa Sediba

Go tla remiwa ditlhare mo Sedibeng sengwe le sengwe gore thuto ya popego ya maje e ka dirwa.

31.2.4. Legato la go Tlathloba Sediba

Ditlathloba tsa sediba di akaretsa go lekanya maparego a a farologaneng, go akaretsa selekanyo sa kelelo, kgatelelo, le popego ya seedi. Tshedimosetso e e kokoantsweng ka nako ya go tlathloba sediba e tla dirisiwa go bona kgonagalo ya kuno ya sediba, boleng jwa bodutelo, le mathata a a ka nnang gone a a ka tlhokang gore a rarabololwe.

Tlathloba ya sediba e tla thusa ka dilo tse di latelang:

- Go lemoga mathata a a ka nnang gone ka sediba kgotsa bodutelo, a a jaaka go senyega ga popego kgotsa go nna teng ga metsi kgotsa gase. Tshedimosetso eno e ka dirisiwa go godisa kuno le go fokotsa ditshenyegelo;
- Go neelana ka tshedimosetso ya bothokwa ka tiro ya sediba, e e ka dirisiwang go godisa kuno le go fitlhelela lookwane le gase ka botlalo;
- Tlathloba ya sediba e ka neelana ka tshedimosetso ya bothokwa ka mekgwa ya bodutelo, e e jaaka go elela le go nna bokoa jwa popego. Tshedimosetso eno e ka dirisiwa go thabolola mekgwa ya go nonotsha phitlhelelo ya lookwane.

31.2.5. Legato la go Tlogela Sediba

E le gore go tlhomamiswe gore go se ka ga nna le tshenyego e e oketsegileng mo tikologong ka ntlha ditiro tse di akantshitsweng, go tla dirisiwa tsela e e rulagantsweng sentle ya go tlogela didiba, e e akaretsang go tswala sentle mafelo otlhe a lookwane le ka dutlang gone kgotsa mo metsi a ka elelang gone, go sa kgathalesege gore ke mo legatong lefe. Go bothokwa go ela tlhoko gore kgang ya go bopega ga diedi ga e tshwanela go akarediwa. Tiro ya go tswala ka samente e tlile go dirwa. Leano le le thadilweng le le bontshang mafelo a didiba tse di lemogilweng le go tlogelwa a leng mo go one le tlile go romelwa go PASA morago ga ditiro tsa go batlisisa; le fa go ntse jalo, setifikeite sa go tswala se tla bonwa, fa go tlhokega.

31.2.6. Legato la go Senya

Fa ditiro tsa kwa saeteng di sena go wediwa, motšhine wa go epa le didirisiwa tsotlhe tse di amegang, metšhine le dithulusu, di tlile go ntshiwa mo saeteng. Kwa bofelong, tiro ya go tsosolosa lefatshe e tlile go dirwa go fitlha mo selekanyong se se amogelwang ke mong wa lefatshe.

32. Lefelo le le Lebagantsweng le Mafelo a Mangwe

Lefelo: Go na le mafelo a a lemogilweng jaaka mafelo a a lebagantsweng mo teng ga lefelo le go dirilweng kopo ya tshwanelo ya go batlisisa gone. Mafelo a mangwe a tile go batlisisiwa ka Legato la Tiro le ka Legato la Tshkatsheko ya Ditlamorago mo Tikologong. Mafelo a a bokoa thata a tile go tilwa mme Dipego tsa Tshkatsheko ya Baitseanape di tile go akanyetsa mafelo a a ntseng jalo.

Thekenoloji – Tiriso ya motšhine wa go Epa: Go akantshiwa gore Crowne Royale Energy e dirise motšhine wa go epa go dira ditiro tse di amanang le porojeke e e akantshitsweng.

33. TLHOKO LE KELETSO

Aforika Borwa, dikarolo tse di farologaneng tsa Aforika le dikarolo tse dingwe tsa lefatshe di itemogela dikgwetlho tse di amanang le maatla. Metswedi ya lookwane lo lo tswang mo mafikeng e ka neelana ka metswedi e mengwe ya bothokwathokwa ya maatla. Ditlhabololo tse di jaaka tshwanelo ya go batlisisa e e akantshitsweng di ka nna le bokgoni jwa dira tiro ya go lemoga fa e le gore dipopego tsa maje di na le petoroliamo kgotsa lookwane lo lo tlhathwakgolo mo ikonoming.

34. Nako ya go epa le go tlhatlhoba sediba

Thulaganyo ya go epa e tile go patiwa ke go tlhatlhoba. Ditsamaiso tseno tsoopedi di tile go latelwa ka dikgwedi di le mmalwa. Go tsenngwa tirisong ga dithulaganyo tseno malebana le didiba tse di tla epiwa go tile go akaretsa tsamaiso e e rulaganeng ya go tlhomamisa gore kgato e e latelang e a tsewa, fa e le gore dipholo/ditemogo tsa kgato e e fetileng di bontsha fa go na le kgonagalo ya gore kgato e e latelang e ka dirwa. Go lebeleletse gore go epa mo saeteng nngwe le nngwe go dirwe mo lobakeng lwa dikgwedi di le tharo.

35. Go Fitlhelela Lefatshe

Tsamaiso ya molao e tile go latelwa gore go fitlhelelwe mafelo a a kgalhegelwang mo teng ga lefelo le go dirilweng kopo ya tshwanelo ya go batlisisa.

36. Tsamaiso ya Tikologo

Thulaganyo ya Tsamaiso ya Tikologo e tile go kwalwa, go fetisiwa mo tsamaisong ya botsayakarolo jwa setšhaba le go romelwa go DMRE, ka PASA gore e akanyediwe le go dirwa tshwetso ka yone.

37. PATLISISO KGOTSA TLHAGISO YA MO ISAGWENG

Selo se se bothokwa se se tlhokang go elwa tlhoko ke gore, tshedimose tso e e kwadilweng mo pampitshaneng eno e na le kopo ya tshwanelo ya go batlisisa ka maikaelelo a go dira ditiro tse di amanang le go epa le go tlhatlhoba. E le gore go

ka dirwa ditiro tsa mo isagweng, motlhami kgotsa motho yo o dirang kopo o tshwanetse go bona tetla go tswa go DMRE, ka PASA. Go bona tshedimose tso kgotsa dintlha tse di oketsegileng ka tlabololo e e akantshitsweng, ikgolaganye le Moitseanape wa Tsamaiso ya Tikologo yo dintlha tsa gagwe tsa go ikgolaganya di kwadilweng mo tsebeng ya bofelo ya tokumente eno, le fa dikhoping tse o di kopang tsa Pego ya Tiro le tsa Dipego tsa Tshekatsheko ya Ditlamorago mo Tikologong.

38. Motheo wa Tikologo ya Thutotshelo

8.1. Seting ya Lefelo la Kgaolo

Thuto ya maje a Kgaolo ya Waterberg e na le Ditlhopho Tsa Botlhokwa tsa maje tse di tlhano. Lefelo la tiro kopo ke popego ya ditlhopho tsa Waterberg le Lebowa, mme setlhopho sa Beaufort sa tatelano ya Karoo se e leng popego ya kgaolo ya bokone.

Tlelaemete: Lefelo la kopo ya tshwanelo ya go batlisisa le mongobo go sekaenyana mme le tsiditsana go feta kgaolo ya bokone ya Masepala wa Kgaolo wa Waterberg.

Mmu le bokgoni jwa lefatshe: Lefelo la kopo ya tshwanelo ya go batlisisa le na le mefuta e e farologaneng ya mmu, go akaretse mmu o o se nang popego le o o farologaneng ka popego.

Modikologo wa metsi: Go na le noka e e kgabaganyang kgaolo eo le metswedi e mengwe ya metsi e e lemogilweng mo teng ga lefelo la porojeke.

Metsi a a ka fa tlase ga lefatshe: Go na le didiba tse di setseng di le gone mo teng ga lefelo la tiro kopo; le fa go ntse jalo, ke tsa tiriso ya poraefete.

Dimela: Lefelo la porojeke le mo Teng ga Savanna Biome mme le tsewa e le Springbovlakte Thornveld, le bogolo jwa lone bo leng mo Limpopo, Bokone Bophirima.

Boleng jwa Moya: Boleng jwa moya mo tikologong ya lefelo la porojeke le na le kgwetlho ka kakaretso, e re ka go na le ditiro tsa meepo le tsa madirelo mo dikgaolong.

38.1. SETSO SA TIKOLOGO

Metswedi ya Ngwaoboswa/Setso: Metswedi ya Ngwaoboswa le ya Setso e gone mo teng ga lefelo la tiro kopo. Metswedi yotlhe e e lemogilweng e tlele go nna karolo ya pego ya boitseanape e e lebeletsweng.

Metswedi ya thuto ya difosele: Lefelo la porojeke le tletse ka difosele tse dintsi thata tsa botlhokwa.

38.2. TIKOLOGO YA LOAGO LE IKONOM

Loagao le ikonomi: Go ka direga gore baagi ba Bela-Bela le Moretele ba amilwe ke tlhabololo e e akantshitsweng, segolobogolo fa go ka kgonega gore tlhabololo ya mo isagweng e nne gone.

Tiriso ya lefatshe: Lefelo la kopo ya go batlisisa le diriseditswa ditiro tsa madirelo, temothuo le meepo, gareng ga tse dingwe.

39. DITHUTOPATLISISO TSA BOITSEANAPE GO ITSISE KA TSAMAISO YA TETLA YA GO DIRISA TIKOLOGO

Ditshekatsheko tsa boitseanape tse di latelang di tile go dirwa jaaka karolo ya tsamaiso ya EIA:

- Tshekatsheko ya Mefutafuta ya Ditshedi Tsa mo Metsing;
- Tshekatsheko ya Thuto ya Metsi a a Kafa Tlase ga Lefatshe;
- Tshekatsheko ya Ditlamorago mo Ngwaobosweng;
- Tshekatsheko ya Lerata le go Roroma;
- Tshekatsheko ya Ditlamorago mo Thutamaropeng (*Desktop*); le
- Ditshekatsheko tsa Mefutafuta ya Ditshedi Tse di Tshelang mo Lefatsheng.

40. TSAMAISO YA TETLA YA GO DIRISA TIKOLOGO LE YA BOTSAYAKAROLO JWA SETŠHABA

40.1. TSAMAISO YA TETLA YA GO DIRISA TIKOLOGO

Tsamaiso ya EIA e neelana ka tshedimoseiso ya porojeke, malebana le dikarolo tsa tsamaiso le tikologo e porojeke e akantshitsweng gone. E lemoga le go sekaseka, ka go ikgolaganya le di-I&AP, ditlamorago tse di bosula le tse di molemo mo tikologong, setsong, le mo loagong le ikonoming.

Gape tsamaiso ya tshekatsheko ya tikologo e bega ka dikgato tsa botsamaisi tse di tlhokegang go ya selekanyong se se amogelesegang, mme e akaretsa dipatlafalo tsa dithulaganyo tsa go baya leitlho (fa go tlhokega). Dikgato le dinako tsa tsamaiso di kwadilwe fa tlase:

Go tlhaeletsana le di-I&AP ka dikopano le go ikgolaganya le bone.			
Go kwala Pego ya Tiro le tshobokanyo.			
Go romela kopo ya EA go DMRE.			
Go anamisa Pego ya Tiro go di-I&AP gore a e sekaseke (lobaka lwa malatsi a le 30 a go e sekaseka).		R	- ele ga gore tiro e simolot
Go romela Pego ya Tiro (e e akaretsang dikakgelo tsa I&AP) go DMRE gore le e sekaseke le go akgela ka yone (lobaka			
Go dira dipatlisiso/dithutopatlisiso tsa boitseanape tse di akantshitsweng.			
Go kwala EIA le EMPr le tshobokanyo.			
Go anamisa EIA le EMPr go di-I&AP le balaodi ba melao gore ba e sekaseke (lobaka lwa malatsi a le 30 go di sekaseka)		R	- ele ga gore tiro e simolot
Submit EIA and EMPr (inclusive of I&AP comments) to the DMRE for decision making (107-day decision-making period)			
Go phasalatsa tshwetso ya DMRE go di-I&AP ka gangwe fela fa e sena go amogelwa.			
Tsamaiso ya boikuelo (fa go tlhokega) go ya ka Melawana ya Boikuelo.			

e tshwanetse go duelwa pele ga gore tokument

TSAMAISO YA BOTSAYAKAROLO JWA SETŠHABA

Boikaelelo jwa tsamaiso ya botsayakarolo jwa setšhaba ke go itsise di-I&AP ke porojeke e e akantshitsweng le go ba naya tshedimose tso e e maleba, le go ba naya tshono ya go tlhagisa mathata le matshwenyego malebana le porojeke e e akantshitsweng. Tsamaiso ya botsayakarolo jwa setšhaba e tliile go dirwa go ya ka dipatlafalo tsa Kgaolo 6 ya Melawana ya EIA ya 2014, jaaka e fetotswe.

Di-I&AP tse di amegang mo tsamaisong ya EIA e kwadilwe fa tlase:



Go ka direga gore ditiro tse di lebeletsweng tse di akantshitsweng di ame didirisiwa tsa ngwaoboswa ya setso tse di ka tswang di le mo lefatsheng leo. O ka kgona go fitlhelela (go tloga ka **03 Diphlane 2023**) Dipego tsa Tikologo (Pego ya Tshekatsheko gape le Pego ya Tshekatsheko ya Ditlamorago mo Tikologong) ka go ya webosaeteng ya www.thayatrading.co.za go di fitlhelela ka tsela e e tokafetseng. Batho botlhe le Batsayakarolo ba ba Nang le Kgatlhego le ba ba Amegang [Interested and Affected Parties (I&APs)] ba lalediwa gore ba romele ditokelelo kgotsa ditshwaelo dipe fela tsa bone go Thaya Trading Enterprise go tloga ka letlha le kitsiso eno e dirilweng ka lone go fitlha (ka kgotsa pele ga) **07 Ngwanatsele 2023**. Batsayakarolo botlhe ba ba Nang le Kgatlhego le ba ba Amegang ba ba kwadisitsweng ba tlile go nwa tshono ya go nna le seabe mo nakong yotlhe ya kopo ya tsamaiso e e Kopanetsweng ya Tiriso ya Tikologo. Khopi ya Pego ya Tshekatsheko e teng go ka sekasekwa ke setšhaba (go tloga ka **03 Diphlane 2023**) kwa Laeboraring ya Ga-Motle, Laeborari ya Jericho, Laeborari ya Letlhabile, dikantong tsa masepala wa selegae wa Bela-Bela Laeborari ya Mphebotho, dikantong tsa masepala wa selegae wa Moretele, Laeborari ya Papi Ntjane, le kwa Laeboraring ya Tladistad. Gape, etela www.thayatrading.co.za go e iponela yone.

Batsayakarolo bape fela ba ba Nang le Kgatlhego kgotsa ba ba Amegang ba a lalediwa fano go ikwadisa mme dikganetsano dipe fela kgotsa ditokelelo dipe fela di tshwanetse go bolelelwa kgotsa go kwalelwa Mankge wa Tshekatsheko ya Tikologo yo o kwadilweng fa fatshe pele ga **07 Ngwanatsele 2023**, gore a e ele tlhoko:

Mankge wa Tshekatsheko ya Tikologo (Kwindla Nobaza) | Thaya Trading Enterprise | 9705 Eerste Laan | Rooisand | Kathu | 8446 | Mog: 053 723 2257 | Mog: 071 959 9207 | Imeili: info@thayatrading.co.za

Mankge wa Ngwaoboswa | Archaeological & Heritage Services Africa (Pty) Ltd | 8843 Odessa Crescent, Cosmo City Ext 7, Northriding 2188 | Imeili: e.matenga598@gmail.com | Founo Selula: 073 981 0637

Mankge wa Ngwaoboswa | South African Heritage Resources Agency | P.O. Box 4637, Cape Town 8000 | Mog: (021) 462 4502 | Fekese: (021) 462 4509 | Imeili: info@sahra.org.za

PETROLEUM AGENTSKAP SUID-AFRIKA VERW. NR.: 12/3/345 ER

		Lefelo	
Mokgatlho / Lefapha (<i>Fa go tlhokega</i>)			
Dintlha Tsa go Ikgolaganya			
		Leina le Sefane	
Aterese ya Poso			
	Khouto ya Poso		
Aterese ya Kago			
	Khouto ya Poso		
Nomoro ya go Ikgolaganya kwa Tirong			
Nomoro ya Founo ya Selula			
Aterese ya Imeili			
Mong wa Lefatshe le Monni wa Lefatshe			
Kwala le/kgotsa tlhalosa fa e le gore molelwane wa lefelo la gago o mo teng ka lefelo la tiro kopo kgotsa nnyaa, tsweetswee re neye Leina la Polase ya gago le nomoro kgotsa karolo kgotsa nomoro ya Erf			
Mofuta / Mokgwa wa Kgatlhego		o (Ee / Nnyaa / Ga e ge)	
Tsweetswee kwadisa Lefapha/Mokgatlho/Motho jaaka Motho yo o Kgatlhegang le yo o Amegang (I&AP) wa tlhabololo e e akantshitsweng			
Ke/moemedi wa me a ka rata go newa khopi ya Dipego Tsa Tiro le Tsa Tshakatsheko ya Ditlamorago mo Tikologong malebana le tlhabololo e e akantshitsweng.			
Mokgwa o o molemo wa tlhaeletsano (<i>Tshwaya ka X</i>)			
Tshenolo			
Nna, _____ yo o saenileng fa tlase, ke senola fano dikgwebo dipe fela tsa tlhamalalo, madi, dikgatlhego tsa me le / kgotsa dipe fela tse dingwe tse nka tswang ke na le tsone mo go amogelweng kgotsa go ganwa ga kopo e e amanang le tlhabololo e e akantshitsweng.			
Mosaeno: _____		Letlha _____	
Karolo Eno e Dirisiwa ke Ofisi le Kafa Gare			
Nomoro ya Tshupiso		Mosaeno wa yo o Kwalang Tshedimosetso	

Tsweetswee golosega go manega dimamettlelelo fa o eletsa go dira jalo.

Ke na le ditshwaelo kgotsa dikakgelo tse di latelang ka tlhabololo e e akantshitsweng tse nka rata go di romela:

Ke na le ditshwaelo kgotsa dikakgelo ka tsamaiso ya botsayakarolo jwa setšhaba tse nka rata go di romela:

Tsweetswee abelana, fa lo na le tetla ya go dira jalo, maina a a feletseng le dintlha tsa go ikgolaganya tsa batho ba bangwe ba ba ka tswang ba na le kgatlhego mo tlhabolong e e akantshitsweng le mo tsamaisong e e ntseng e tswelela ya kopo ya tetla ya go dirisa tikologo:

TSWEETSWEE ROMELA FOROMO E E TLADITSWENG YA GO IKWADISA LE PAMPIRI YA DITSHWAELO PELE GA LABOBEDI, 07 NGWANATSELE 2023 GO:

Thaya Trading Enterprise CC

Kwindla H. Nobaza

Nomoro ya Selula & WhatsApp No.: 071 959 9207

Imeili: info@thayatrading.co.za

Tshedimosetso ya botho ya Batho ba ba Kgatlhengang le ba ba Amegang e tiile go dirisiwa ka maikaelelo a go tlhaeletsana ka nepo dikakgelo le matshwenyego le mmadi gammogo le Molaodi yo o Tshwanelang. Tshedimosetso ya gago ya botho e tiile go bolokiwa mo lenaaneng la tshedimosetso.	A o neelana ka tumelelo ya gore tshedimosetso ya gago ya botho e dirisiwe mo Pegong ya Ditlamorago mo Tikologong le gore o bolokiwe mo Lenaaneng la Tshedimosetso?	
	EE	NNYAA